

**Ministry for the Environment, Sustainable Development, and Climate Change**

**Report on a survey of the influx of migratory Common Quail and Turtle Dove over the Maltese Islands, made in Spring 2019**

Prepared by



12, Sir Arthur Borton Street  
Mosta, MST1881  
MALTA

Telephone: (+356) 2143 1900

Fax: (+356) 21424 137

e-mail: [info@ecoserv.com.mt](mailto:info@ecoserv.com.mt)

[www.ecoserv.com.mt](http://www.ecoserv.com.mt)

**ECOSERV REPORT REFERENCE: 082-19**

**MAY 2019**

---

This report has been compiled by:

**JOSEPH A. BORG**

BSc MSc PhD (Plymouth) CBiol FRSB FIBMS FMBA

**AND**

**JULIAN EVANS**

BSc (Hons) MSc PhD (Plymouth) CBiol MRSB MMBA

Coordinator of study logistics:

**SARAH DEBONO**

BSc (Hons) MSc MRSB



---

Report checked by:

Julian Evans BSc(Hons) MSc PhD CBiol MRSB MMBA



---

Report approved by:

Joseph A Borg BSc MSc PhD CBiol FRSB FIBMS FMBA

## **1. Introduction**

---

On 18<sup>th</sup> December 2018, the Ministry for the Environment, Sustainable Development and Climate Change (hereafter 'MESDC') published a call for tenders bearing reference 367/2018 and titled "Service tender for an independent scientific study on the influx or passage of migratory Common Quail and Turtle Dove in Malta during the 2019 spring season". The Terms of Reference (ToR) of the call are as follows:

### **2 Contract Objectives and Expected Results**

#### **2.1 Overall Objectives**

*The overall objective of the contract is to provide an independent study on the influx or passage of the migratory turtle dove and common quail in Malta during the 2019 Spring season.*

#### **2.2 Specific Objectives**

*The specific objectives of this contract are as follows:*

- To survey and scientifically monitor the daily influx of the Turtle Dove and Common Quail;*
- To estimate the overall presence (influx) of these two species per day and for the whole study period, subject to scientifically justified assumptions;*
- To analyse observed and estimated migration trends in conjunction with the trends recorded in past studies, and in conjunction with any hunting data on the species surveyed, if applicable*

#### **2.3 Results to be achieved by the Consultant**

*The following results are expected to be delivered:*

- 1. Daily datasheets with raw counts for Turtle Dove and Common Quail;*
- 2. A monitoring report for Spring 2019 season which must include:*
  - a) List of monitoring stations which recorded high/low counts;*
  - b) Dates which indicate high/low peaks in the migration of the Turtle Dove and Common Quail;*
  - c) A daily estimate of the influx of these two species for the whole of the Maltese Islands;*
  - d) The estimated total influx for these species for the whole of the study period, subject to scientifically justified assumptions;*
  - e) A comparative analysis with the results of previous studies commissioned during Spring 2008 & 2009; 2012; 2013, 2014, 2015, 2016, 2017 and 2018. Reports available on: <http://environment.gov.mt/en/Pages/WBRU/Reports-and-Statistics.aspx>*
  - f) A comparison between the results of the present study and any hunting data on the species surveyed, if applicable.*

## **3. Assumptions and Risks**

### **3.1 Assumptions Underlying the Project Intervention**

*For the purposes of this bird migration study, it will be assumed that the consultant shall use the daily counts obtained from the monitoring stations to extrapolate the approximate estimate of the total influx of the Turtle Dove and Common Quail over the Maltese islands during the period stipulated in Section 3 Article 18. Moreover, it shall also be assumed that the passage of birds at different localities is extremely variable and may be subject to local topographic, anthropogenic, climatic and other conditions which are to be taken into account in the appropriate extrapolation methods that shall be used to estimate the total influx of the species concerned.*

### **3.2 Risks**

*Execution of the bird migration study is dependent on an adequate enrolment of the ornithologists / field assistants who shall be manning the monitoring stations (at least 24 in number, of which at least 10 stations are to be active on any given day during the monitoring period). It shall be the responsibility of the consultant to ensure that the monitoring stations (at least 10 in number on any given day), are manned by a sufficient number of ornithologists and/or field assistants. The numbers and location of the monitoring stations, as well as the level of personnel deployed in each station should be consistent with the corresponding parameters deployed in past studies of this nature in Malta. The consultants shall propose strategies to address the identified risks. These proposals shall be included in the tenderer's technical offer. This tender shall in no way be construed or perceived as obliging the Government or any other relevant authority to take any decision concerning application of any derogation in spring 2019.*

## **4 Scope of the Work**

### **4.1 General**

#### **4.1.1 Project Description**

*The monitoring of the influx or passage of the Turtle Dove and Common Quail shall take place during Spring 2019, between 15 March and 15 May, inclusive of both dates. The contractor shall mobilise all staff and equipment by early March, in preparation for the execution of the Spring 2019 bird migration study.*

*The bird migration study should comprise the on-field surveying and scientific monitoring of the daily influx of migration of both species concerned. This would provide an independent verification of the level of presence of the two species in Spring and the timing of their migration. This shall be achieved by generating a "Migration Count," that is a count of migrant birds of both species in question in the stipulated time span when monitoring is undertaken. The collection of scientific data to elucidate general population trends for both species is beyond the scope of this bird migration study. The contractor must submit the daily datasheets with raw counts to the Contracting Authority at the end of each week.*

*The draft monitoring report and analysis is to be submitted by 22 May 2019. Once the draft Spring 2019 report has been certified for quality assurance by the Contracting Authority, the final Spring 2019 monitoring report is to be submitted within 5 working days from such a review.*

#### 4.1.2 Geographical Area to be covered

*The three inhabited islands of the Maltese archipelago, namely Malta, Gozo and Comino.*

#### 4.1.3 Target Groups

*Not applicable*

### 4.2 Specific Activities

*The bird migration study shall monitor the influx of migratory specimens of the Turtle Dove and the Common Quail, bearing in mind any methodological limitations in the monitoring of these species (as identified in the European Union Management Plan for the Common Quail).*

*A field protocol of standard operating procedures, which will be used in the same manner from day to day should be designed by the commissioned experts on the basis of best practice procedures. There might be a need to take into consideration however, the flexibility of the techniques used to meet the constraints imposed by local geographical conditions.*

*A network of monitoring stations will need to be set up throughout the three inhabited islands of the Maltese archipelago for the study period. Such a network would need to comprise at least 24 monitoring stations. Each of these monitoring stations shall be operated on at least two days per week and manned by at least two ornithologists and/or field assistants. The number of active stations on any given day shall be at least 10. Monitoring in Malta, Gozo and Comino shall be carried out on a daily basis, however this requirement shall be waived with respect to Comino on those days when access to the Island would not be possible due to adverse weather conditions. The ornithologists and/ or field assistants shall be persons with appropriate abilities to carry out bird identification in flight and shall specifically have the capacity to identify both Turtle Dove and Quail in the field with ease.*

*For each day during the bird monitoring phase, at least 10 monitoring stations must be fully manned. The exact number, location and area of the monitoring stations will be determined in consultation with scientific experts who are commissioned to undertake this bird migration study. Given that the survey is aimed at quantifying the influx or passage of migrating specimens, all monitoring stations shall be placed in strategic locations depending on the species being surveyed and the expected geographical occurrence of the species depending on the timing of the migration. The location of the monitoring stations shall be selected with care and shall not include areas where the settlement or sighting of the Turtle Dove and the Common Quail cannot in practice occur.*

*Each, monitoring station should include or encompass a defined 'count area' that has features that are compatible with the chosen count procedures. Moreover, no matter the type of method, the experts should also define the total daily 'count period', as well as the standard daily time periods during which the various component activities of bird counting procedures occur.*

*Surveys should focus on observations made, and should be coordinated by the Project co-ordinator or/and scientist/s, so as to enable an appropriate scientific determination with ecological statistics and/or models leading to population estimates (possibly through the extrapolation of results, with standard errors being indicated) and should cover, at least, the*

three main inhabited islands of the Maltese archipelago. The migration count can include birds counted at a site, observed flying past a fixed point in diurnal migration or alighting onto the ground or trees. For monitoring small landbirds, particularly nocturnal migrants, attention should be drawn to birds observed at short-term stopover sites immediately following a migratory flight. There are several options for producing a useful migration count of small landbirds; these options include: visible migration count; area search or route census counts; incidental observations; and daily estimated totals. The commissioned experts should define in the final monitoring report what they will consider as a migration count and what standardised methods will be used.

Nonetheless, in view that the Common Quail has a preference for cover and may be more difficult to observe or be detected, the surveys for this species should focus on area searches. These may include, the use of dogs to flush the birds out and/or through the use of line transects (a method where observers traverse the monitoring area in close parallel lines to search the area). Surveys for the Common Quail should be carried out for at least two hours in the morning (prior to 12:00hrs) at each of the monitoring stations in operation.

The surveys of the Turtle Dove, on the other hand, should focus mainly on observations (which should include both specimens observed in flight as well as those alighting within the study site). The monitoring of this species needs to be carried out during the times of maximum activity/ major influx of the Turtle Dove and for a minimum of seven hours at each of the monitoring stations in operation. The consultant may also propose a variation to such methodology, but this shall not take effect unless previously agreed with and confirmed in writing by the Contracting Authority and shall in any case not involve any trapping or any taking of any bird, whether alive or dead, nor any part of any bird.

Standardisation of counting methods can make a major contribution to removing extraneous variation derived from variable observer effort and sampling procedures. Nevertheless, migration counts will still be subject to uncontrollable variation from weather, observer differences, and unavoidable changes in the level of effort. Such problems should be addressed by the use of appropriate analytical procedures.

Daily datasheets with raw counts need to be drawn for each of the monitoring stations in use, such that the prevalent meteorological conditions, namely wind direction and speed, the degree of cloud cover; the habitat type; bird counts; the times and locations; and the names of the field assistants, are all recorded. The count data collected for a pre-defined area and the count period at each study site shall be used to establish the average counts (per day) recorded in a typical monitoring station for both the Common Quail and Turtle Dove. The calculations for such counts also need to include the standard deviation errors. Such mean counts shall then be extrapolated so as to cover the total area where the species may settle / which serves as short-term stopover sites, in order to estimate the total number of birds migrating daily over the Maltese Islands.

The appropriate methodology for extrapolation shall be determined by the scientific experts taking into account the possibility of repeat counting of observed birds; the patchiness of each species' distribution and frequency depending on available appropriate habitat; the seasonal geographical variation in the frequency of sightings dependent on the expected migration flow direction and any assumptions taken for such calculations need to be clearly stated in the monitoring report.

Relevant seasonal, local topographic (e.g. configuration of the coast), climatic and anthropogenic factors (such as degree of local urbanization) shall be duly taken into account in

*the extrapolation methodology, subject to scientifically justified assumptions. The methodology shall not involve trapping or any taking of any bird, whether alive or dead, nor any part of any bird.*

*The contractor must submit the daily datasheets with raw counts to the Contracting Authority at the end of each week of each of the bird monitoring periods. The draft monitoring report and analysis for Spring 2019 is to be submitted by 22 May 2019. Once such draft report has been certified for quality assurance by the Contracting Authority, the final Spring 2019 monitoring report is to be submitted within 5 working days from such a review.*

*These activities will result in:*

- 1. Daily datasheets with raw counts for the Turtle Dove and Common Quail*
- 2. A monitoring report for the season.*

#### **4.3 Project Management**

##### **4.3.1 Responsible Body**

*The overall responsibility of the implementation of this contract lies with the Contracting Authority. An official will be appointed to oversee the implementation of the contract.*

##### **4.3.2 Management Structure**

*The Head of the Wild Birds Regulation Unit within the Ministry for the Environment, Sustainable Development and Climate Change is the official responsible for this contract. The Head may delegate various tasks to other officials within the Wild Birds Regulation Unit and may appoint an official to act as a project manager and to monitor the progress of this project.*

##### **4.3.3 Facilities to be provided by the Contracting Authority and/or other parties**

*None*

#### **5. Logistics and Timing**

##### **5.1 Location**

*The Republic of Malta. The monitoring stations shall be set up at appropriate locations within the three inhabited Maltese Islands, namely in Malta, Gozo and Comino.*

*The contractor, moreover, is expected to compile reports, prepare scientific analysis, and prepare the setup of the administrative framework from his own premises. The contractor should be available during office hours via e-mail and telephone.*

##### **5.2 Commencement Date & Period of Execution**

*The intended commencement date is the date of signature of the contract but shall not, in any case, be later than 15 March 2019. Article 19.1 of the Special Conditions will determine the actual commencement date and period of execution.*

#### **6. Requirements**

##### **6.1 Personnel**

---

*The Service Provider/s must be a natural person, or a legal entity providing the below Key Experts:*

*A list of the key experts and other staff proposed for the execution of the contract as per Form marked Key Experts to be submitted online through the prescribed tender response format (tender structure).*

*Key Expert 1:*

*A Project co-ordinator who must be:*

*In possession of a Ph.D. or other academic qualification at MQRIC level 8 related to natural sciences*

*Key Expert 2:*

*A Scientist who must be:*

*In possession of a Masters degree or other academic qualification at MQRIC level 7 in natural sciences*

*The above key expertise can be provided by a single person, provided that he/she has the required qualifications as stipulated above.*

#### **6.1.1 Other Experts**

*CVs for experts other than the key experts are not examined prior to the signature of the contract.*

*The Consultant shall select and hire other experts as required according to the profiles identified in the Organisation & Methodology and these Terms of Reference.*

*All experts must be independent and free from conflicts of interest in the responsibilities accorded to them.*

*The selection procedures used by the Contractor to select these other experts shall be transparent, and shall be based on pre-defined criteria, including professional qualifications, language skills and work experience. The findings of the selection panel shall be recorded. The selection of experts shall be subject to approval by the Contracting Authority.*

#### **6.1.3 Support Staff and Backstopping**

- The bird migration study is to be supported by ornithologists or field assistants with relevant experience in bird identification.*
- Other support staff should be capable in carrying out statistical analysis, report writing and/or other relevant administration work.*

#### **6.2 Accommodation**

*Office accommodation of a reasonable standard and of approximately 10 square metres for each expert working on the contract is to be provided by the Consultant.*

#### **6.3 Facilities to be provided by the Contractor**

*The Contractor shall ensure that experts are adequately supported and equipped. In particular it shall ensure that there is sufficient administrative, secretarial and interpreting provision to enable experts to concentrate on their primary responsibilities. It must also transfer funds as necessary to support its activities under the contract and to ensure that its employees are paid regularly and in a timely fashion.*

*The contractor shall provide the equipment, software and hardware needed for carrying out surveys, data gathering, storage, analysis and evaluation.*

*If the Contractor is a consortium, the arrangements should allow for the maximum flexibility in project implementation. Arrangements offering each consortium partner a fixed percentage of the work to be undertaken under the contract should be avoided.*

## **6.4 Equipment**

*No equipment is to be purchased on behalf of the Contracting Authority as part of this service contract or transferred to the Contracting Authority at the end of this contract. Any equipment related to this contract which is to be acquired by the beneficiary country must be purchased by means of a separate supply tender procedure.*

*The Contractor shall be responsible for establishing his own sources for goods, equipment, materials and software to perform the necessary activities and tasks, which may include:*

- *Field Monitoring equipment, as appropriate e.g. binoculars, compass (to measure wind direction), radar equipment etc.*
- *Gun dogs to flush out Common Quails*
- *Research equipment*

## **7. Reports**

### **7.1 Reporting Requirements**

*Daily data sheets with raw counts need to be drawn for each of the monitoring stations in use, such that the prevalent meteorological conditions, namely wind direction and speed, the degree of cloud cover, the habitat type, bird counts, the times and locations, the names of the field assistants all need to be recorded.*

*Following the survey/study period a detailed analysis shall be carried out on the data collated which are to be presented in a Report. Such a report is to indicate:*

- *the raw counts*
- *sampling methodology used*
- *the time schedule for the monitoring taken place*
- *the locations where monitoring was carried out and the estimated area of each site of observation*
- *the peak and low counts for each of the species under study*
- *the locations/monitoring stations which had peak/low counts*
- *an extrapolation indicating the total influx of the Turtle Dove and the Common Quail migrating over the Maltese Islands for each day*

- *an estimated total influx of the Turtle Dove and the Common Quail for the whole study period*
- *assumptions taken for such estimates*
- *an analysis of the observed and estimated migration trends in conjunction with the trends recorded in past studies, and in conjunction with any hunting data on the species surveyed, if applicable*

*These reports should only concern information/data on the influx of the migratory birds and should not include personal opinions of the Contractor.*

*The contractor must submit the daily datasheets with raw counts to the Contracting Authority at the end of each week during the Spring 2019 bird monitoring phase. The draft Spring 2019 report and analysis is to be submitted by 22 May 2019. Once such draft report has been certified for quality assurance by the Contracting Authority, the final Spring 2019 monitoring report is to be submitted within five working days from such a review. All Spring 2019 project activities must be completed to the Contracting Authority's satisfaction by 29 May 2019. All reports and other forms of written communication must be presented in an editable format using commonly available software.*

*All reports must be approved by the Contracting Authority before these can be considered finalised. All reports will be property of the Contracting Authority and it will have sole copyright.*

## **7.2 Submission & approval of progress reports**

*The daily data sheets with raw counts and two (2) hard copies and a soft copy of each of the monitoring reports referred to above must be submitted to the Project Manager identified in the contract. The raw datasheets and the report must be written in English. The Project Manager is responsible for approving the draft monitoring report.*

## **8 Monitoring and Evaluation**

### **8.1 Definition of Indicators**

<b>Results</b>	<b>Objectively verifiable indicators</b>	<b>Sources of verifications</b>
<i>Daily datasheets with raw counts of the Turtle Dove and Common Quail</i>	<i>The original raw datasheets which are to be completed on site during the monitoring process to be submitted by the end of each week of the monitoring phase.</i>	<i>The original datasheets submitted to the Contracting Authority.</i>
<i>Spring 2019 Monitoring report which presents a clear analyses of the monitoring carried out</i>	<i>The draft monitoring report shall be completed by 22 May 2019. The monitoring report will be finalised by the contractor and approved by the Contracting Authority by 29 May 2019.</i>	<i>The actual monitoring report presented by the contractor.</i>

Ecoserv Ltd (hereafter 'Ecoserv') submitted a response to the tender and was subsequently notified that the company's bid was successful.

The present submission constitutes Ecoserv's report of the independent scientific study on the influx of migratory Common Quail *Coturnix coturnix* and Turtle Dove *Streptopelia turtur* in Malta, undertaken by the company during the period 15 March to 15 May 2019, which includes the period during which the 2019 spring season was open for hunting Quail (10 to 30 April 2019).

An overview of the migratory behaviour of the two bird species, as well as an overview of local bird hunting and trapping activities and of EU legislation concerning these activities, have been presented in Ecoserv (2011). Although there is a dearth of published information on migration of the Common Quail and Turtle Dove across the Maltese Islands, a considerable amount of data has been collected over the past decade, with such collection of data being initiated by Thomaidis (nd), who studied the occurrence and patterns of movement of these two species over the Islands between spring 2008 and autumn 2009. The data used to compile the report by Thomaidis (nd) were recorded by assigned hunters who contributed to the surveys under his supervision and coordination. Subsequently, regular local surveys of migration of these two species were carried out between 2011 and 2018 by Ecoserv (Ecoserv, 2011; 2012; 2013; 2014; 2015; 2016; 2017; 2018).

In order to put the present study in perspective, an overview of the findings from previous similar studies (Ecoserv, 2011; 2012; 2013; 2014; 2015; 2016; 2017; 2018) follows. These findings, including the survey period and duration, range of mean daily counts, and estimated total influx for Turtle Dove and Common Quail recorded in different years, are summarised in Table 1. The minimum and maximum mean daily count, and the total estimated influx, are largely dependent on the survey period and duration; thus values for surveys held over different periods are not directly comparable.

For Turtle Dove, when comparing the results of the various surveys, a similar trend of counts amongst the different survey sessions is noted overall. The general pattern is of very low mean bird counts recorded in March and early April, and higher counts recorded in mid-April to early May, that subsequently peter out during May. These included peak counts in some years, namely: in 2008, a very high mean count (98, on 15-4-08) and a secondary peak (26, on 20-04-08) were recorded by Thomaidis (nd), while in 2018 a single main peak (25, on 19-04-18) was recorded (Ecoserv, 2018). No mean counts greater than 20 were recorded in any of the other years. Thus, the main migration of Turtle Dove usually occurs in the last three weeks of April, occasionally with migratory peaks occurring on some days, but migration can also extend to May.

In the case of Common Quail, the overall trend recorded from the various surveys is that migratory bird counts start to increase in late March, with the highest counts recorded in mid to end April, and a subsequent decrease in counts during May. No particularly high peak counts were recorded in any of the surveys: the highest count was recorded in 2012 (3.1, on 19-04-12; Ecoserv, 2012). Thus, the migration of Common Quail mostly occurs between late March and early May, with higher influx occurring during the last three weeks of April.

In the various reports (Ecoserv, 2011; 2012; 2013; 2014; 2015; 2016; 2017; 2018), the authors stressed that estimates of total influx for Turtle Dove and Common Quail must be treated with utmost caution, given the relatively small number of field sites used in the surveys, that counts were not made daily at each site, and since the extrapolation procedure used is likely to result in a rough estimate. Birds may migrate along specific pathways, such that the influx at different localities can be extremely variable, with potential large differences in the number of individuals recorded from two different localities, even if these are separated by a very small distances. In the case of Turtle Dove, the authors also emphasised that the length of coastline surveyed per day (4 km) amounted to less than 1.5% of the total coastline; the accuracy of the estimated total migratory influx would be higher if a larger proportion of coastline is surveyed. It was also noted that the total coastline length used in the extrapolation includes stretches of coast that are highly developed and densely inhabited, for example,

the Sliema – Valletta and Cottonera areas, where one would expect some disturbance to birds migrating at low altitude, hence their numbers there would be expected to be lower, resulting in an overestimate. Another limitation emphasised by the authors is that the Turtle Dove migration counts were recorded over a seven-hour period, hence any individuals migrating at other times of the day were not included. This could have led to a potential underestimate of the total influx if significant Turtle Dove migration occurred outside of the survey time period, although the one used in the surveys (06:00–13:00 or 07:00–14:00) represents the time during which the activity of Turtle Dove is deemed maximum. In the case of the Common Quail, the authors noted that the daily area surveyed amounts to less than 1% of the total local area that can potentially be used by this species; the accuracy of the estimated total migratory influx would thus be higher if a larger area is surveyed.

Table 1

Summary of findings made during surveys of the migration of Turtle Dove and Common Quail undertaken in spring 2011 – 2018 (Ecoserv, 2011; 2012; 2013; 2014; 2015; 2016; 2017; 2018).

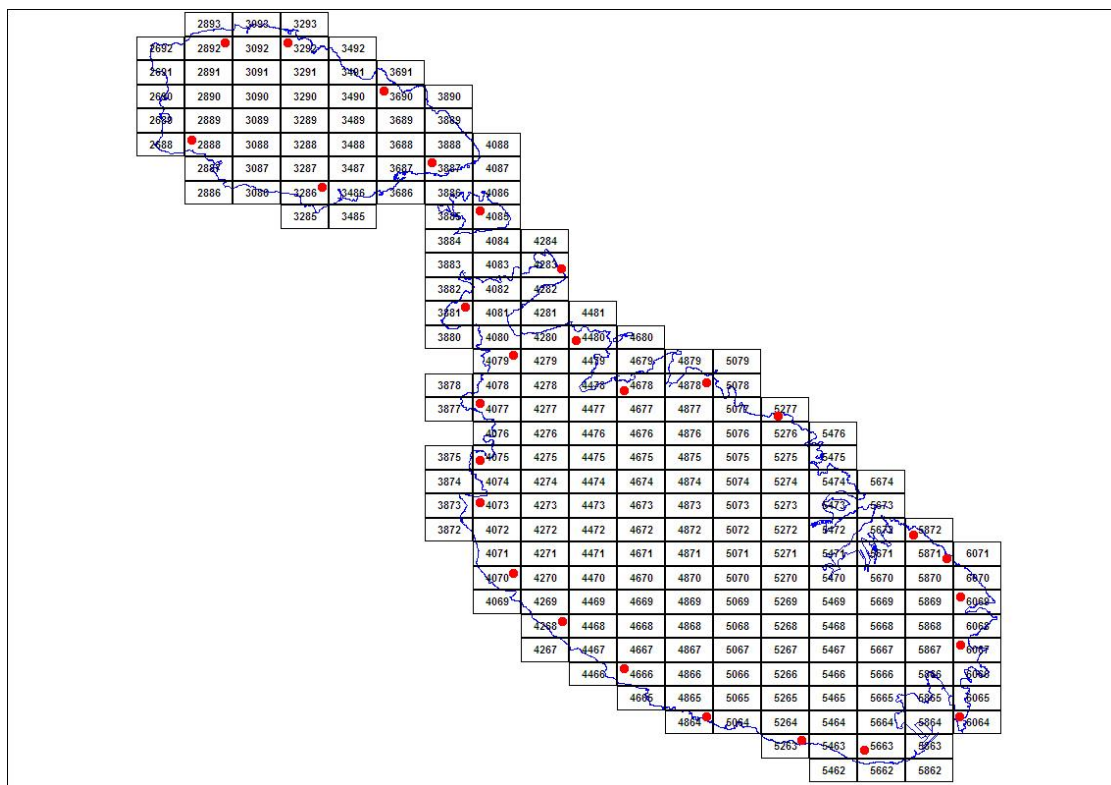
Year	Survey period	Duration (days)	Turtle Dove		Common Quail	
			Range of mean daily counts	Estimated total influx	Range of mean daily counts	Estimated total influx
2011	8 May – 28 May	21	0.38 – 4.25	18,057	0.00 – 1.38	22,699
2012	9 Apr – 26 May	48	0.00 – 11.75	57,160	0.00 – 3.13	35,018
2013	10 Apr – 30 Apr	21	0.75 – 12.29	42,521	0.00 – 0.75	67,460
2014	10 Apr – 30 Apr	21	0.30 – 6.00	24,922	0.00 – 0.70	37,773
2015	14 Apr – 30 Apr	17	0.00 – 9.20	25,006	0.00 – 0.40	20,211
2016	10 Apr – 30 Apr	21	0.20 – 5.40	22,349	0.00 – 1.00	31,264
2017	25 Apr – 14 Apr	21	0.00 – 2.90	7,539	0.00 – 0.60	27,615
2018	1 Apr – 21 Apr	21	0.10 – 25.10	34,333	0.00 – 0.90	46,503

The authors stressed that the Turtle Dove and Common Quail migratory count data presented in Ecoserv's reports (Ecoserv, 2011; 2012; 2013; 2014; 2015; 2016; 2017; 2018) can only be used for purposes of trend analysis. Even in this respect, due caution should be exercised given that the sampling effort used in the studies undertaken by Ecoserv, while partly based on that reported and utilized by Thomaidis (nd) for the years 2008 and 2009, was not identical. In addition, comparison of data collected by Ecoserv from 2011 onward is also limited because the exact survey period varied amongst different years (see Table 1). The authors emphasised that robust and rigorous assessment of migratory influx requires trend analysis based on data from monitoring carried out regularly over a sufficiently long period comprising subsequent years, and using the same methodology. For each year, the data should ideally be collected over the whole migratory season and using a larger sampling effort; for example, by making counts daily at all of a minimum 28 sites. Nevertheless, the data from surveys provides a useful indication of the influx of Turtle Dove and Common Quail over the years, provided that results of the studies are interpreted in the context of these limitations.

## 2. Methodology

The methodology used by Ecoserv during the present (spring 2019) survey is identical to that used in surveys made by the same company in previous spring seasons (see Ecoserv, 2011; 2012; 2013; 2014; 2015; 2016; 2017; 2018); the survey design is aimed at assessing changes in migratory influx, which entails trend analysis based on data from monitoring carried out regularly over a sufficiently long

period comprising subsequent years, and using the same methodology. During the survey, two individuals – a field assistant capable of identifying Turtle Dove and Common Quail and an observer who was responsible for recording data in the field – were stationed at a total of 28 sites (= count stations) distributed around Malta, Comino and Gozo. The survey was undertaken over a 2-month period between 15 March and 15 May 2019. During the survey, counts of individuals of the two species *Coturnix coturnix* and *Streptopelia turtur* were made at 10 different sites each day. Each group of sites was surveyed once every 3 days, such that a total of 28 sites were surveyed over each period of 3 days. Furthermore, wherever possible, the study site at Comino was included in the 10 sites surveyed on any one day, such that this site was surveyed on a daily basis. When weather conditions precluded surveys at the Comino site due to unavailability of sea transport services, these were undertaken at an alternative site (Qala) instead. The sampling sites used in the present study include ones used in the previous surveys undertaken during spring 2011–2018 (see Ecoserv, 2011; 2012; 2013; 2014; 2015; 2016; 2017; 2018), and are represented by the grid cell reference numbers listed in Table 2, while their locations are shown in Figure 1.



**Figure 1.** Map of the Maltese Islands showing the localities (grid cells indicated by the red filled circle) where the bird counts were made; see also Table 1.

Table 2

List of grid locations where monitoring of influx of migratory birds was carried out.

Location	Day 1	Day 2	Day 3
Gozo	2892	3690	3292
Gozo	3887	3286	2888
Comino	4085	4085	4085
Malta	3881	4077	4079
Malta	4073	4075	4070
Malta	4268	5263	4666
Malta	4864	5663	6064
Malta	6067	6071	6069
Malta	5872	5277	4878
Malta	4678	4480	4283

Since the survey was mainly aimed at quantifying the influx of migrating individuals, field sites were sited at strategic locations within coastal areas. Birds also fly in at different altitudes; sometimes they are observed flying high over coastal areas and they may either keep that course as they overfly or alight in inland areas. In the case of Turtle Dove, the number of individuals observed flying within each study site was recorded, while the count area was estimated as the area within the observer's field of view when observing horizontally (c. 500m) and vertically upwards (as far as the birds were detected by sight). Since the Common Quail is mainly a nocturnal migrant, monitoring of this species was based on counts of individuals that would have settled in during the previous night. Surveys of Quail entailed the use of trained dogs to locate and flush the birds out from vegetation, in order to count them when they take flight. The count area was taken as the total area surveyed in this manner at a particular site. Monitoring of Turtle Dove was made between 07:00 and 14:00, while monitoring of Common Quail was made during a two hour period sometime between 07:00 and 12:00. The count data collected for the pre-defined area and count period at each study site was used to establish the mean number of birds recorded for each day of the survey.

At each study site, the observers also recorded the prevalent weather conditions, namely wind direction and strength, and degree of cloud cover. This information is available on the survey raw data sheets, copies of which have been submitted to the Wild Birds Regulation Unit (WBRU) of the MESDC.

### 3. Results

Ecoserv's laboratory report reference for the present survey is **082-19**. The sample reference codes for the bird count data are **B-037-19** to **B-092-19**.

#### Turtle dove

Raw counts for Turtle Dove recorded from the 28 sites during the present study varied between 0 and a maximum of 20 (see Appendix I), while the mean daily counts ranged between 0 and 5.6 (Table 3). The counts recorded from different sites incorporate only minor peaks. During the present (2019) migration, peak numbers of Turtle Dove were recorded between 16 April and 4 May. The recorded counts varied appreciably between the different sites. At the lower end, at grid locations 4678 and 5263 (see Figure 1), only 10 Turtle Dove individuals were recorded throughout the survey period, while

at the higher end, 66 Turtle Doves were recorded from the site at grid location 4085 (which was surveyed daily), and 50 individuals were recorded from the site at grid location 3881.

Values of mean and total daily counts of Turtle Dove recorded during the period 15 March to 15 May from the present survey are summarised in Table 3. These same values are also shown in Figure 2 along with values of mean counts for the same period in 2009 (Thomaidis, nd). Figure 2 also shows the mean daily counts recorded in 2008 (Thomaidis, nd), 2012 (Ecoserv, 2012), 2013 (Ecoserv, 2013), 2014 (Ecoserv, 2014), 2015 (Ecoserv, 2015), 2016 (Ecoserv, 2016), 2017 (Ecoserv, 2017) and 2018 (Ecoserv, 2018). However, it should be noted that, apart from the 2009 survey, none of the previous surveys covered the entire period from 15 March to 15 May (see Table 1); hence there is only partial overlap between the survey period used in most previous studies and that used in the present study.

Overall, counts recorded during the present survey show a similar trend to those recorded in previous surveys. The general pattern is of very low counts recorded in March and early April, with marginally higher counts recorded from mid-April to early May. The daily mean counts recorded during the present survey are similar to those recorded in previous years. Occasional peaks were recorded in some years: in 2008, a very high mean count (98, on 15-4-08) and a secondary peak (26, on 20-04-08) were recorded, while a single main peak (25, on 19-04-18) was recorded in 2018; no mean counts greater than 20 were recorded in any of the other years, including during the present survey.

**Table 3**

**Mean ( $\pm$  SD) and total daily counts of Turtle Dove recorded during the present study, together with estimates of daily and total influx of migratory individuals.**

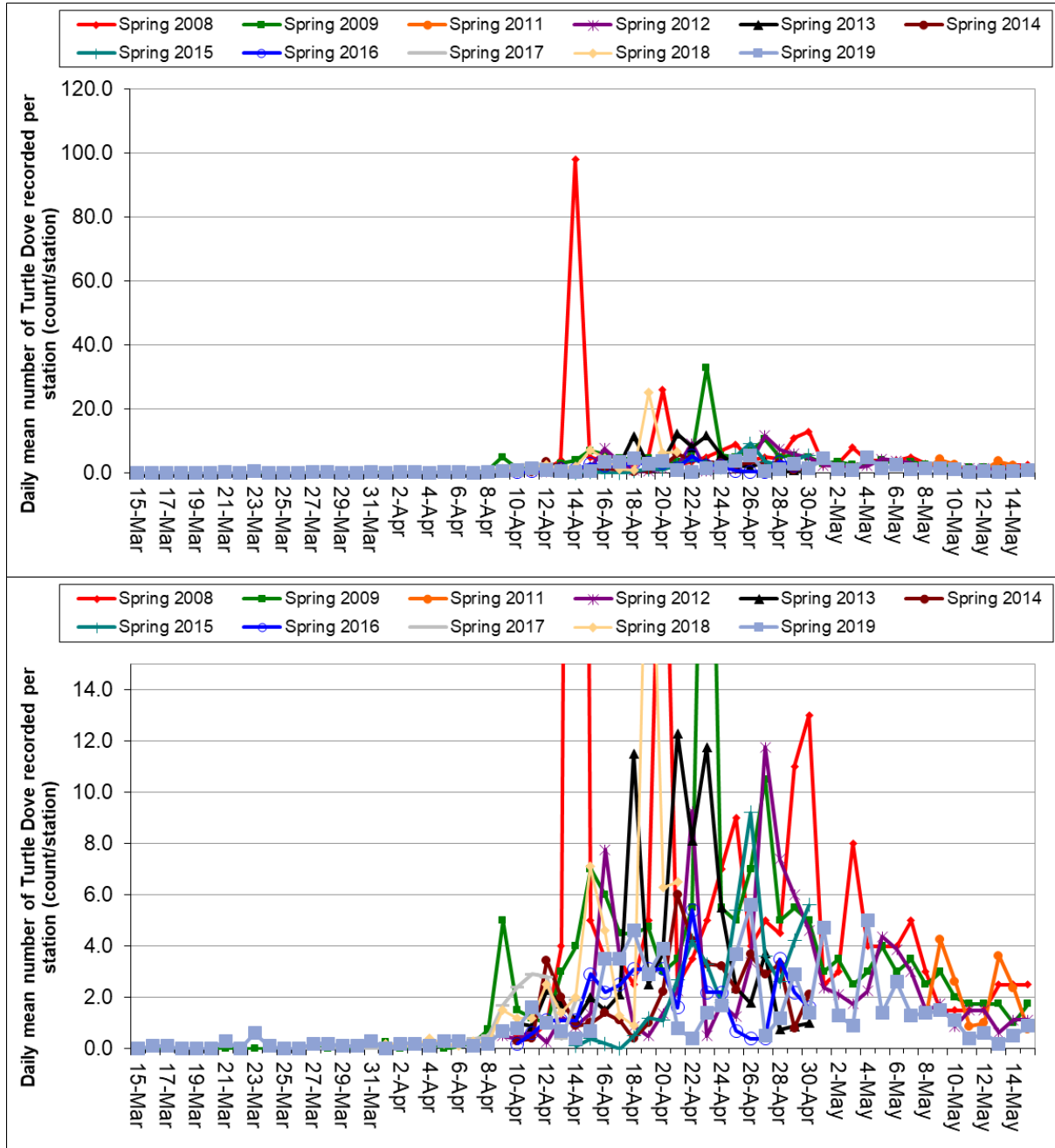
Date	Mean Daily Count $\pm$ SD		Total Daily Count	Estimated Total Daily Influx
15-Mar-19	0.00	$\pm$ 0.00	0	0
16-Mar-19	0.10	$\pm$ 0.32	1	54
17-Mar-19	0.10	$\pm$ 0.32	1	54
18-Mar-19	0.00	$\pm$ 0.00	0	0
19-Mar-19	0.00	$\pm$ 0.00	0	0
20-Mar-19	0.00	$\pm$ 0.00	0	0
21-Mar-19	0.30	$\pm$ 0.95	3	163
22-Mar-19	0.00	$\pm$ 0.00	0	0
23-Mar-19	0.60	$\pm$ 1.90	6	325
24-Mar-19	0.10	$\pm$ 0.32	1	54
25-Mar-19	0.00	$\pm$ 0.00	0	0
26-Mar-19	0.00	$\pm$ 0.00	0	0
27-Mar-19	0.20	$\pm$ 0.63	2	108
28-Mar-19	0.20	$\pm$ 0.42	2	108
29-Mar-19	0.10	$\pm$ 0.32	1	54
30-Mar-19	0.10	$\pm$ 0.32	1	54
31-Mar-19	0.30	$\pm$ 0.95	3	163
01-Apr-19	0.00	$\pm$ 0.00	0	0
02-Apr-19	0.20	$\pm$ 0.63	2	108
03-Apr-19	0.20	$\pm$ 0.42	2	108
04-Apr-19	0.10	$\pm$ 0.32	1	54
05-Apr-19	0.30	$\pm$ 0.67	3	163
06-Apr-19	0.30	$\pm$ 0.67	3	163
07-Apr-19	0.10	$\pm$ 0.32	1	54
08-Apr-19	0.20	$\pm$ 0.42	2	108

Date	Mean Daily Count $\pm$ SD		Total Daily Count	Estimated Total Daily Influx
09-Apr-19	0.70	$\pm$ 1.34	7	380
10-Apr-19	0.80	$\pm$ 0.63	8	434
11-Apr-19	1.60	$\pm$ 2.01	16	868
12-Apr-19	1.00	$\pm$ 1.94	10	542
13-Apr-19	0.70	$\pm$ 0.95	7	380
14-Apr-19	0.40	$\pm$ 0.52	4	217
15-Apr-19	0.70	$\pm$ 1.34	7	380
16-Apr-19	3.50	$\pm$ 4.40	35	1899
17-Apr-19	3.50	$\pm$ 6.11	35	1899
18-Apr-19	4.60	$\pm$ 5.97	46	2495
19-Apr-19	2.90	$\pm$ 3.00	29	1573
20-Apr-19	3.90	$\pm$ 5.38	39	2116
21-Apr-19	0.80	$\pm$ 0.92	8	434
22-Apr-19	0.40	$\pm$ 0.97	4	217
23-Apr-19	1.40	$\pm$ 1.78	14	759
24-Apr-19	1.70	$\pm$ 1.25	17	922
25-Apr-19	3.70	$\pm$ 2.58	37	2007
26-Apr-19	5.60	$\pm$ 5.60	56	3038
27-Apr-19	0.50	$\pm$ 0.71	5	271
28-Apr-19	1.20	$\pm$ 1.40	12	651
29-Apr-19	2.90	$\pm$ 2.28	29	1573
30-Apr-19	1.40	$\pm$ 1.26	14	759
01-May-19	4.70	$\pm$ 4.72	47	2549
02-May-19	1.30	$\pm$ 1.42	13	705
03-May-19	0.90	$\pm$ 0.99	9	488
04-May-19	5.00	$\pm$ 5.66	50	2712
05-May-19	1.40	$\pm$ 1.96	14	759
06-May-19	2.60	$\pm$ 1.96	26	1410
07-May-19	1.30	$\pm$ 2.36	13	705
08-May-19	1.40	$\pm$ 1.43	14	759
09-May-19	1.50	$\pm$ 1.96	15	814
10-May-19	1.10	$\pm$ 1.37	11	597
11-May-19	0.40	$\pm$ 0.70	4	217
12-May-19	0.60	$\pm$ 1.58	6	325
13-May-19	0.20	$\pm$ 0.42	2	108
14-May-19	0.50	$\pm$ 0.71	5	271
15-May-19	0.90	$\pm$ 1.10	9	488
<b>Sum Total</b>			<b>712</b>	<b>38,616</b>

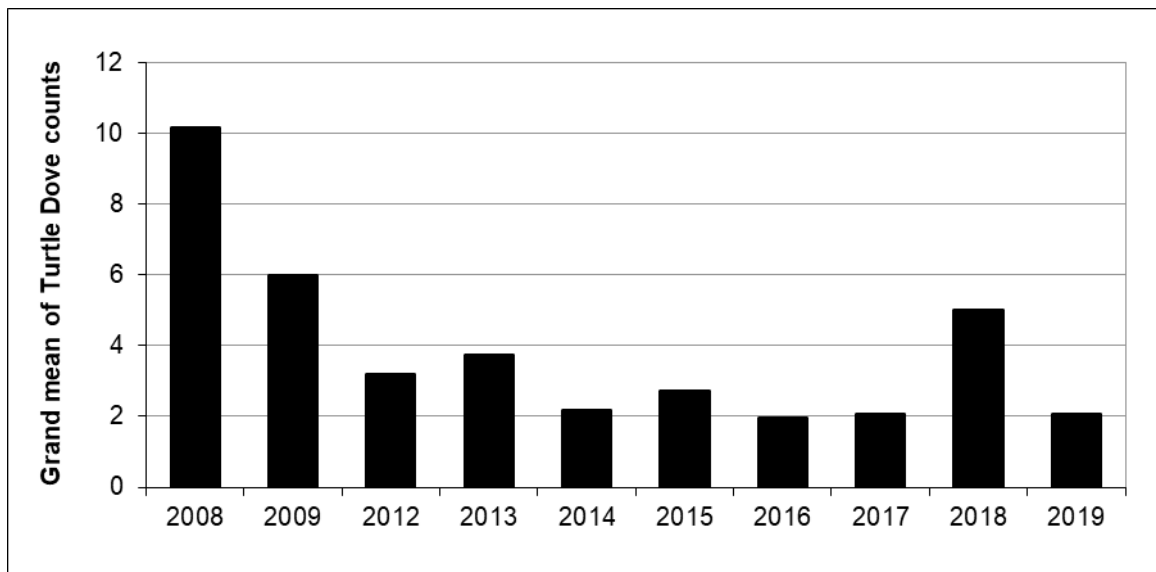
The grand mean of Turtle Dove counts recorded during the period 15 March to 15 May from the present (2019) survey is 1.15; this is lower than the grand mean of 2.76 recorded over the same period in 2009.

Comparisons of the grand mean for the period 15 March to 15 May with other previous surveys is not possible since the latter covered much shorter periods. The main period which was covered by most surveys is from 10 to 30 April. Values of the grand mean of Turtle Dove counts recorded during this period (10 to 30 April) from the present (2019) survey, together with values of the grand mean for the same period in 2018, 2009 (Thomaidis, nd), 2012, 2013, 2014 and 2016 (Ecoserv, 2012; 2013; 2014; 2016), for the period 14 to 30 April 2015 (Ecoserv, 2015), for the period 10 to 14 April 2017 (Ecoserv,

2017), and for the period 10 to 21 April 2018 (Ecoserv, 2018) are shown in Figure 3. Overall, the grand mean recorded during the present (2019) survey during the period 10 to 30 April is similar to that recorded from surveys held between 2014 and 2017, but lower than that recorded from other surveys, especially that made in 2008.



**Figure 2.** Daily mean counts of Turtle Dove per station (= site) recorded during the present (spring 2019) survey held between 15 March and 15 May, together with values of the same statistic for: spring 2008 and 2009 as reported in Thomaidis (nd), spring 2012 as reported in Ecoserv (2012), spring 2013 as reported in Ecoserv (2013), spring 2014 as reported in Ecoserv (2014), spring 2015 as reported in Ecoserv (2015), spring 2016 as reported in Ecoserv (2016), spring 2017 as reported in Ecoserv (2017), and spring 2018 as reported in Ecoserv (2018). *Top:* graph showing all values including peak counts >20 individuals recorded in 2008, 2009 and 2018; *Bottom:* graph showing all values except the peak counts >20 individuals recorded in 2008, 2009 and 2018.

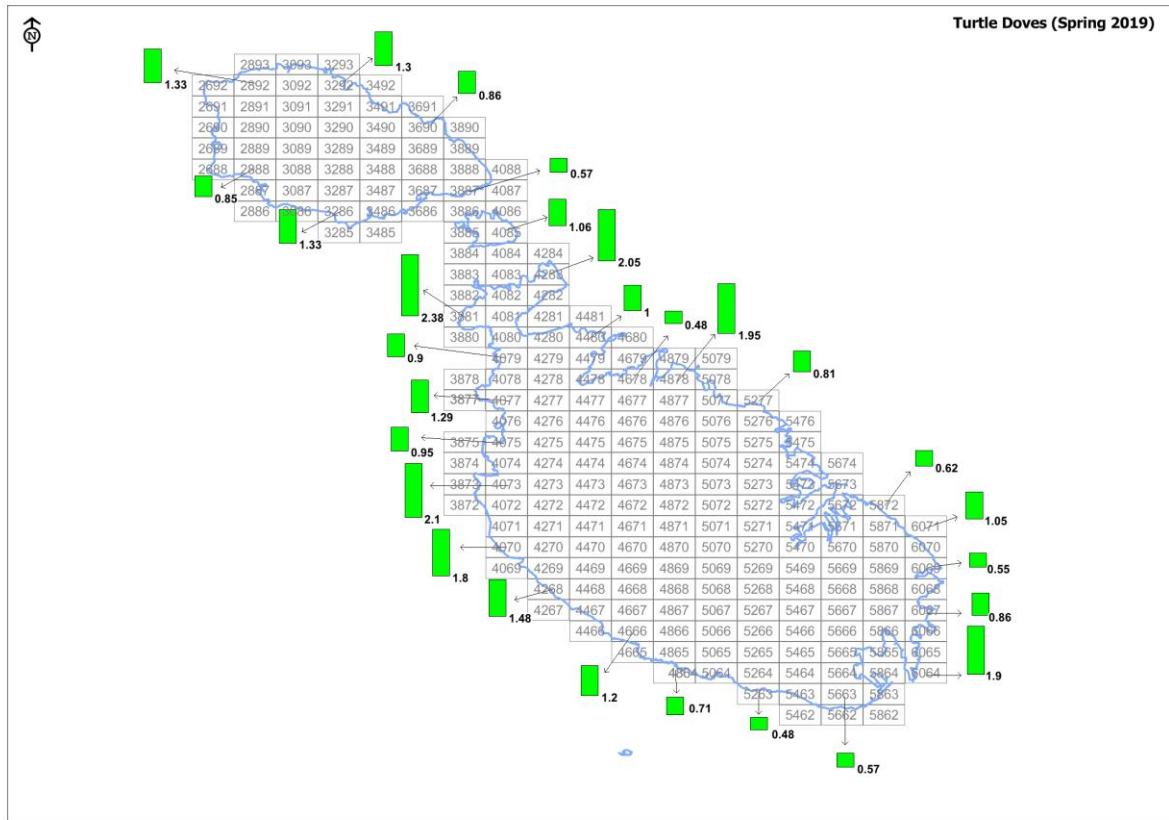


**Figure 3.** Grand mean of Turtle Dove counts for data from the period 10 to 30 April recorded in spring 2019 (present survey) and spring 2008, 2009 (Thomaidis, nd), 2012, 2013, 2014 and 2016 (Ecoserv, 2012; 2013; 2014; 2016), together with the grand mean for data from the period 14 to 30 April recorded in spring 2015 (Ecoserv, 2015), from the period 10 to 14 April recorded in spring 2017 (Ecoserv, 2017), and from the period 10 to 21 April recorded in spring 2018 (Ecoserv, 2018).

Mean count values recorded from each of the 28 sites during the present survey are indicated on the map shown in Figure 4. The highest mean count was recorded from Cirkewwa (Grid 3881), while overall high counts were recorded from other study sites located in the northern parts of Malta, as well as from Delimara. The lowest mean counts were recorded from the southern parts of Malta, as well as from the site at Qala in Gozo. The mean count recorded from the study site on Comino is 1.06, which is very close to the median value for the whole range of recorded mean counts.

As has been done in previous surveys (Ecoserv, 2011; 2012; 2013; 2014; 2015; 2016; 2017; 2018), an estimate of the total influx of Turtle Dove over the Maltese Islands was made using the daily counts recorded from the present survey. Extrapolations were then made to obtain the approximate total number of individuals of this species that are envisaged to have migrated over the Maltese Islands on a particular date. However, as emphasised in reports of surveys from previous years made in spring (Ecoserv, 2011; 2012; 2013; 2014; 2015; 2016; 2017; 2018), such an estimate must be treated with utmost caution, given the relatively small number of sites used on any one day and that the counts were not made daily at each site. Furthermore, passage of birds at different localities is extremely variable, with potential large differences in birds passing at two different sites, even if these are separated by a small distance. As already stated in the introduction section above, the other limiting factor is that the field survey stops at 14:00 and does not start again before 07:00 of the following morning, hence potentially missing birds arriving late in the afternoon and early evening, as well as those arriving during the night, which may have not been recorded by the field observers during the survey. On the other hand, the estimate given in the present report is useful when making comparison between different years, assuming data from surveys based on a similar design are available to assess whether the trend in influx is increasing or decreasing with time. Since the coastal length surveyed at each site during the present survey is approximately 0.5 km, the total influx of migrating Turtle Dove for the three-week study period was estimated by extrapolating the values obtained to the total

coastline length for the Maltese Islands, which have a perimeter of 271.22 km (Mallia *et al*, 2002)<sup>1</sup>. Based on the mean daily counts (Table 3), extrapolation translates to an estimated daily influx ranging between 0 and 3,038 individuals, with a total influx over the survey period (15 March to 15 May 2019; i.e. 62 days) of 38,616 individuals, i.e. some 623 birds per day; see Table 3.



**Figure 4.** Map of the Maltese Islands showing the standard grid and respective codes, including ones used in the present study. The green bars indicate mean counts of Turtle Dove recorded from study sites in the respective cells.

**Common Quail**

The daily observation times by the field observers spent at each quail monitoring station are given in Appendix II. Raw counts for Common Quail recorded from the 28 sites during the present study varied between 0 and a maximum of 5 (see Appendix I), while the mean daily counts ranged between 0 and 1.0. The recorded counts did not vary appreciably between the different sites: at the higher end, a total of 15 individuals were recorded from grid location 4070, while at the lower end 2 Quail individuals were recorded from grid locations 4085, 3881, 4864, 5663, 6071, 4480 and 4283.

Values of mean and total daily counts of Common Quail recorded during the period 15 March to 15 May from the present survey, as well as the respective area surveyed on each day, are given in Table 4. These same values are also shown in Figure 5, along with values of mean counts for the same period in 2009 (Thomaidis, nd). Figure 5 also shows the mean daily counts recorded in 2008 (Thomaidis, nd), 2012 (Ecoserv, 2012), 2013 (Ecoserv, 2013), 2014 (Ecoserv, 2014), 2015 (Ecoserv, 2015), 2016 (Ecoserv,

<sup>1</sup> Note, however, that this estimate includes the perimeter of minor islets and rocks.

2016), 2017 (Ecoserv, 2017) and 2018 (Ecoserv, 2018). However, it should be noted that, apart from the 2009 survey, none of the previous surveys covered the entire period from 15 March to 15 May (see Table 1); hence there is only partial overlap between the survey period used in most previous studies and that used in the present study.

Overall, counts recorded during the present survey show a similar trend to those recorded in previous surveys. The general pattern observed is of low migratory counts in mid-March which start to increase in late March, with the highest counts recorded in mid to end April, and a subsequent decline in counts during May. The daily mean counts recorded during the present survey are overall slightly lower than those obtained in 2009 (Thomaidis, nd) but similar to those recorded in 2008 (Thomaidis, nd) and 2011–2018 (Ecoserv 2011; 2012; 2013; 2014; 2015; 2016; 2017; 2018). Minor peaks of around 2.0–3.0 were recorded in spring 2008, 2009 and 2012, while no mean counts greater than 1.5 were recorded in any of the other years, including during the present survey.

The grand mean of Common Quail counts recorded during the period 15 March to 15 May from the present (2019) survey is 0.25, which is lower than the grand mean of 0.74 recorded over the same period in 2009.

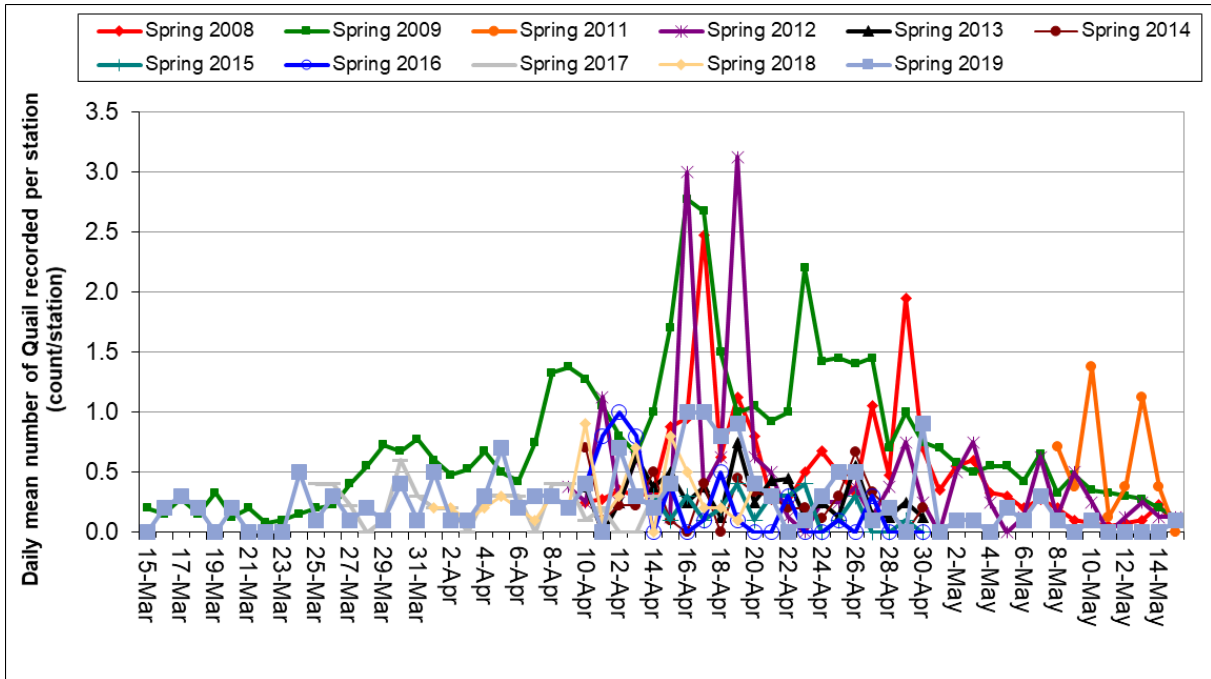
Comparisons of the grand mean for the period 15 March to 15 May with other previous surveys is not possible since these covered much shorter periods. The main period which was covered by most surveys is from 10 to 30 April. Values of the grand mean of Common Quail counts recorded during this period (10 to 30 April) from the present (2019) survey, together with values of the grand mean for the same period in 2018, 2009 (Thomaidis, nd), 2012, 2013, 2014 and 2016 (Ecoserv, 2012; 2013; 2014; 2016), for the period 14 to 30 April 2015 (Ecoserv, 2015), for the period 10 to 14 April 2017 (Ecoserv, 2017), and for the period 10 to 21 April 2018 (Ecoserv, 2018) are shown in Figure 6. Overall, the grand mean recorded during the present (2019) survey during the period 10 to 30 April is slightly higher than that recorded in 2018, higher than that recorded during the 2013–2017 surveys, and lower than that recorded in 2008, 2009 and 2012.

**Table 4**

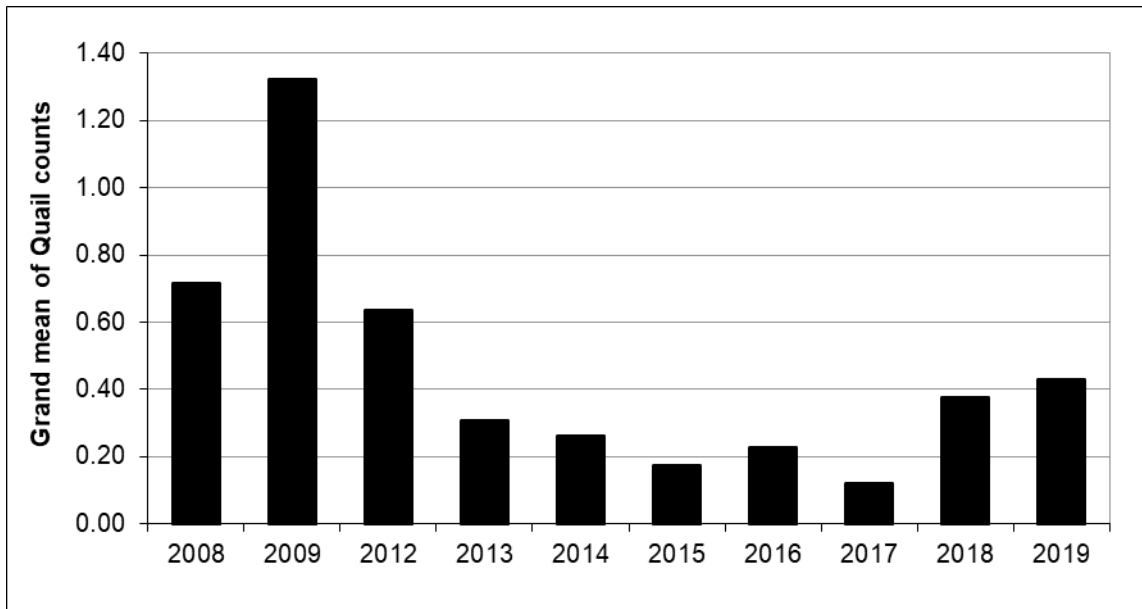
**Mean ( $\pm$  SD) daily counts of Common Quail recorded and area surveyed, together with estimates of daily and total influx of migratory individuals.**

Date	Mean Daily Count $\pm$ SD		Total Area Surveyed (km <sup>2</sup> )	Total Daily Count	Estimated Daily Influx
15-Mar-19	0.00	$\pm$ 0.42	0.232	0	0
16-Mar-19	0.20	$\pm$ 0.63	0.450	2	984
17-Mar-19	0.30	$\pm$ 0.48	0.281	3	2363
18-Mar-19	0.20	$\pm$ 0.42	0.232	2	1907
19-Mar-19	0.00	$\pm$ 0.00	0.450	0	0
20-Mar-19	0.20	$\pm$ 0.42	0.281	2	1575
21-Mar-19	0.00	$\pm$ 0.00	0.232	0	0
22-Mar-19	0.00	$\pm$ 0.00	0.450	0	0
23-Mar-19	0.00	$\pm$ 0.00	0.281	0	0
24-Mar-19	0.50	$\pm$ 0.85	0.232	5	4768
25-Mar-19	0.10	$\pm$ 0.32	0.472	1	469
26-Mar-19	0.30	$\pm$ 0.67	0.303	3	2189
27-Mar-19	0.10	$\pm$ 0.32	0.232	1	954
28-Mar-19	0.20	$\pm$ 0.42	0.472	2	937
29-Mar-19	0.10	$\pm$ 0.32	0.303	1	730

Date	Mean Daily Count $\pm$ SD		Total Area Surveyed (km <sup>2</sup> )	Total Daily Count	Estimated Daily Influx
30-Mar-19	0.40	$\pm$ 0.70	0.232	4	3815
31-Mar-19	0.10	$\pm$ 0.32	0.450	1	492
01-Apr-19	0.50	$\pm$ 0.85	0.303	5	3648
02-Apr-19	0.10	$\pm$ 0.32	0.254	1	870
03-Apr-19	0.10	$\pm$ 0.32	0.472	1	469
04-Apr-19	0.30	$\pm$ 0.48	0.281	3	2363
05-Apr-19	0.70	$\pm$ 1.57	0.232	7	6675
06-Apr-19	0.20	$\pm$ 0.42	0.450	2	984
07-Apr-19	0.30	$\pm$ 0.67	0.281	3	2363
08-Apr-19	0.30	$\pm$ 0.95	0.232	3	2861
09-Apr-19	0.20	$\pm$ 0.42	0.450	2	984
10-Apr-19	0.40	$\pm$ 0.70	0.303	4	2918
11-Apr-19	0.00	$\pm$ 0.00	0.232	0	0
12-Apr-19	0.70	$\pm$ 0.95	0.472	7	3280
13-Apr-19	0.30	$\pm$ 0.48	0.281	3	2363
14-Apr-19	0.20	$\pm$ 0.42	0.232	2	1907
15-Apr-19	0.40	$\pm$ 0.97	0.450	4	1967
16-Apr-19	1.00	$\pm$ 1.05	0.281	10	7875
17-Apr-19	1.00	$\pm$ 1.25	0.254	10	8700
18-Apr-19	0.80	$\pm$ 1.03	0.472	8	3749
19-Apr-19	0.90	$\pm$ 1.10	0.281	9	7088
20-Apr-19	0.40	$\pm$ 0.52	0.232	4	3815
21-Apr-19	0.30	$\pm$ 0.48	0.450	3	1476
22-Apr-19	0.00	$\pm$ 0.00	0.281	0	0
23-Apr-19	0.10	$\pm$ 0.32	0.232	1	954
24-Apr-19	0.30	$\pm$ 0.95	0.472	3	1406
25-Apr-19	0.50	$\pm$ 0.97	0.281	5	3938
26-Apr-19	0.50	$\pm$ 0.97	0.232	5	4768
27-Apr-19	0.10	$\pm$ 0.32	0.450	1	492
28-Apr-19	0.20	$\pm$ 0.42	0.281	2	1575
29-Apr-19	0.00	$\pm$ 0.00	0.232	0	0
30-Apr-19	0.90	$\pm$ 1.10	0.472	9	4217
01-May-19	0.00	$\pm$ 0.00	0.281	0	0
02-May-19	0.10	$\pm$ 0.32	0.254	1	870
03-May-19	0.10	$\pm$ 0.32	0.472	1	469
04-May-19	0.00	$\pm$ 0.00	0.281	0	0
05-May-19	0.20	$\pm$ 0.63	0.232	2	1907
06-May-19	0.10	$\pm$ 0.32	0.450	1	492
07-May-19	0.30	$\pm$ 0.67	0.281	3	2363
08-May-19	0.10	$\pm$ 0.32	0.254	1	870
09-May-19	0.00	$\pm$ 0.00	0.472	0	0
10-May-19	0.10	$\pm$ 0.32	0.281	1	788
11-May-19	0.00	$\pm$ 0.00	0.232	0	0
12-May-19	0.00	$\pm$ 0.00	0.450	0	0
13-May-19	0.00	$\pm$ 0.00	0.303	0	0
14-May-19	0.00	$\pm$ 0.00	0.254	0	0
15-May-19	0.10	$\pm$ 0.32	0.472	1	469
<b>Sum Total</b>				<b>155</b>	<b>113,116</b>

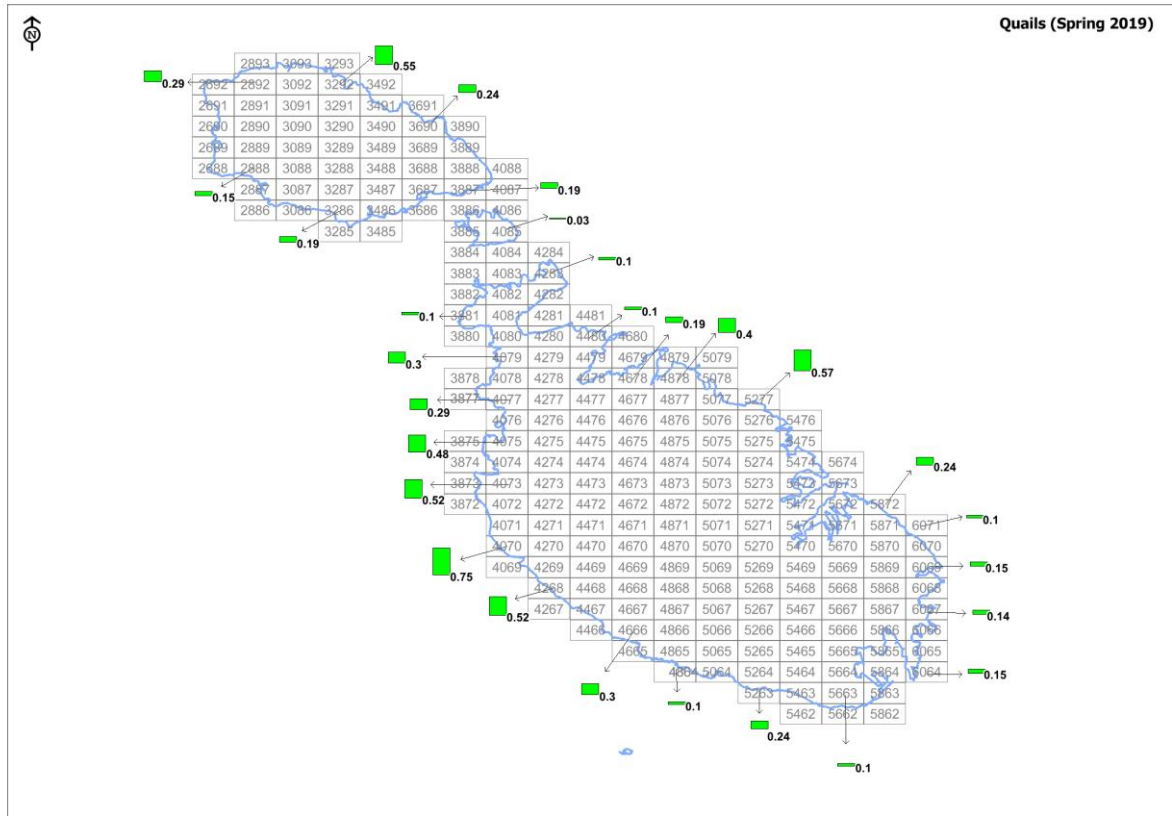


**Figure 5.** Daily mean counts of Common Quail per station (= site) recorded during the present (spring 2019) survey held between 15 March and 15 May, together with values of the same statistic for: spring 2008 and 2009 as reported in Thomaidis (nd), spring 2012 as reported in Ecoserv (2012), spring 2013 as reported in Ecoserv (2013), spring 2014 as reported in Ecoserv (2014), spring 2015 as reported in Ecoserv (2015), spring 2016 as reported in Ecoserv (2016), spring 2017 as reported in Ecoserv (2017), and spring 2018 as reported in Ecoserv (2018).



**Figure 6.** Grand mean of Common Quail counts for data from the period 10 to 30 April recorded in spring 2019 (present survey) and spring 2008, 2009 (Thomaidis, nd), 2012, 2013, 2014 and 2016 (Ecoserv, 2012; 2013; 2014; 2016), together with the grand mean for data from the period 14 to 30 April recorded in spring 2015 (Ecoserv, 2015), from the period 10 to 14 April recorded in spring 2017 (Ecoserv, 2017), and from the period 10 to 21 April recorded in spring 2018 (Ecoserv, 2018).

Mean count values recorded from each of the 28 sites are indicated on the map shown in Figure 7. The highest mean count was recorded from Mtaħleb (Grid 4268), while relatively high counts were recorded from study sites located along the northwestern and northeastern coasts of Malta and from Marsalforn (Grid 3292) in Gozo. The lowest count was recorded from the study site on Comino; comparatively low counts were recorded from several other locations with no obvious geographic pattern.



**Figure 7. Map of the Maltese Islands showing the standard grid and respective codes, including ones used in the present study. The green bars indicate mean counts of Common Quail recorded from study sites in the respective cells.**

As has been done in previous surveys (Ecoserv, 2011; 2012; 2013; 2014; 2015; 2016; 2017; 2018), the total influx of Common Quail was estimated for the whole area of the Maltese Islands using the recorded area surveyed for Quail at each site. However, such an estimate requires the following assumptions: (i) the rate of Quail settling at coastal sites (where the survey was carried out) is equal to that at inland locations, and (ii) the total area used to estimate the migration count does not include areas where settlement of Quail cannot occur in practice. Since Quail tend to migrate to inland sites, settling of Quail in coastal areas will likely be less than or equal to that in inland regions, but not greater, meaning that the estimated total may be an underestimate. The use of only coastal sites is still justified since these are more likely to serve as short-term stopover sites immediately following a migratory flight than inland locations; thus, including inland locations may result in an overestimate of the total influx due to repeated counting of resident Quails. To ensure that the total area used to estimate the migration count does not include regions within which Quail do not normally settle, even though some birds may fly over urbanized areas, the total area was calculated as the sum of agricultural areas (161.5 km<sup>2</sup>), forested areas (2.1 km<sup>2</sup>) and areas of natural vegetation (57.8 km<sup>2</sup>); this

amounts to 221.4 km<sup>2</sup>, representing 72% of the 315 km<sup>2</sup> total area of the Maltese Islands (land cover data source: MEPA, 2010). The mean ( $\pm$  SD) daily counts and estimated total influx of birds per day are shown in Table 4. Based on these data, extrapolation translates to a total influx of Common Quail during 15 March to 15 May 2019 of 113,116 individuals, or some 1,824 Quail per day (see Table 4). However, as emphasised in the reports of previous surveys (Ecoserv, 2011; 2012; 2013; 2014; 2015; 2016; 2017; 2018), such an estimate must be treated with utmost caution, given the relatively small number of field sites used on any one day and that counts were not made daily at each site, such that only a very small portion of the total area of potential habitat in the Maltese Islands was sampled.

#### **4. Comparison with Quail bag data**

---

A comparative analysis of data from the present study with bag data provided by the Wild Birds Regulation Unit (WBRU) of the MESDC was undertaken. The dataset provided by the WBRU comprises the daily bag count of Common Quail (as reported by hunters through a telephone reporting system) for the period 10 to 30 April 2019. It should be noted that the two sets of data were collected for different purposes and using very different methodologies; therefore, the magnitudes of values are not directly comparable. However, the temporal trends can be expected to follow similar patterns; that is, within the same season the periods when higher mean daily counts were recorded during the present survey should broadly follow the days when higher numbers of Common Quail were caught (and reported in the bag data). Graphical representations of the mean or total daily counts made during the present (2019) survey and the daily bag counts for the same period (10 to 30 April 2019; MESDC unpublished data) for Common Quail were prepared to compare temporal trends among the two different data sets.

The daily bag counts, indicating the number of Common Quail caught during the 2019 spring hunting season and the mean daily counts of Common Quail recorded during the present (2019) survey, are shown in Figure 8, while Figure 9 shows the same data but with the results from the present survey given as total daily counts. As already noted, the magnitudes of the bag counts and those of the mean/total counts made in the 2019 survey are not directly comparable; hence the two sets of values are on different scales. Therefore, in Figures 8 and 9, two separate y-axes are used: the bag count data is plotted on the left-side y-axis, whereas the counts from the 2019 survey are plotted on the right-side y-axis.

The daily counts made during the 2019 survey include some day-to-day fluctuations, but the overall pattern is of elevated counts recorded during the period 16–19 April, as well as on 12 April, 25–26 April, and 30 April. Apart from these days marked by elevated counts, no overall trend of increase or decrease in daily survey counts is discernible over the survey period. On the other hand, the bag count data indicate an overall trend of increase, especially towards the end of the survey period. Bag counts reported between 10 and 24 April range between 4 and 20 birds; those reported between 25 and 27 April ranged between 42 and 84 birds, and the highest bag counts of 113, 189 and 282 birds were reported on 28, 29 and 30 April 2019 respectively. The increase in bag counts reported in 28–29 April is not reflected in the daily counts made during the 2019 survey, since very low mean daily counts were recorded on these days. On the other hand, the peak bag count reported on 30 April coincided with one of the peaks in daily counts recorded during the 2019 survey. It should be noted, however, that the total daily counts made during the 2019 survey were low, which introduces an additional difficulty in making interpretations of these comparisons.

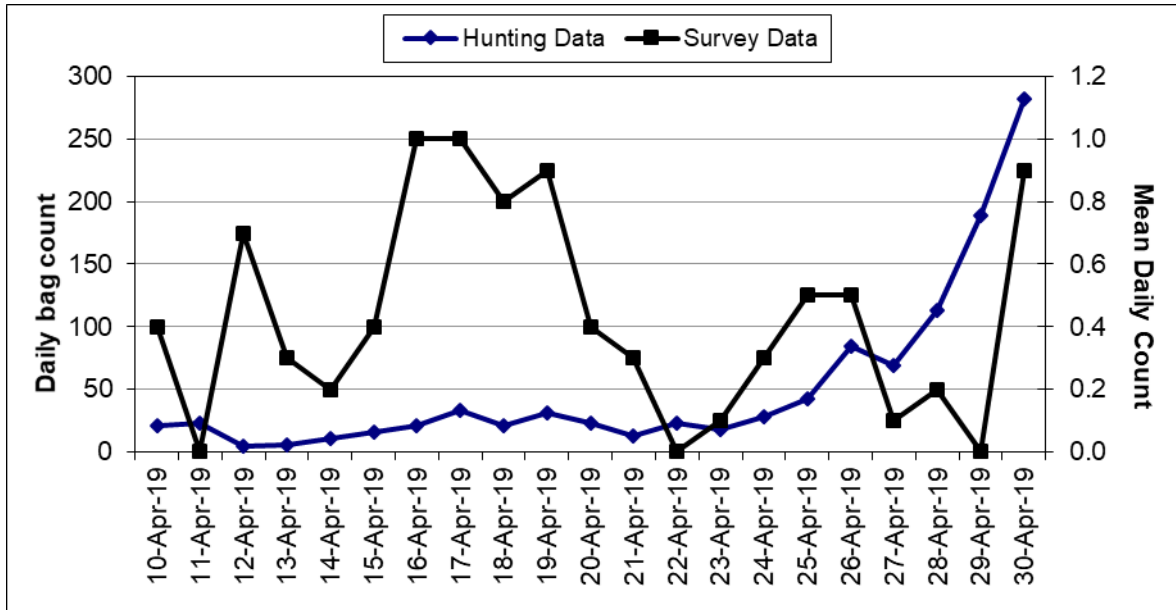


Figure 8. Daily bag count of Common Quail during 2019 (blue line; values on left-side y-axis), together with the mean daily counts recorded during the 2019 survey (black line; values on right-side y-axis), for the period 10 – 30 April 2019.

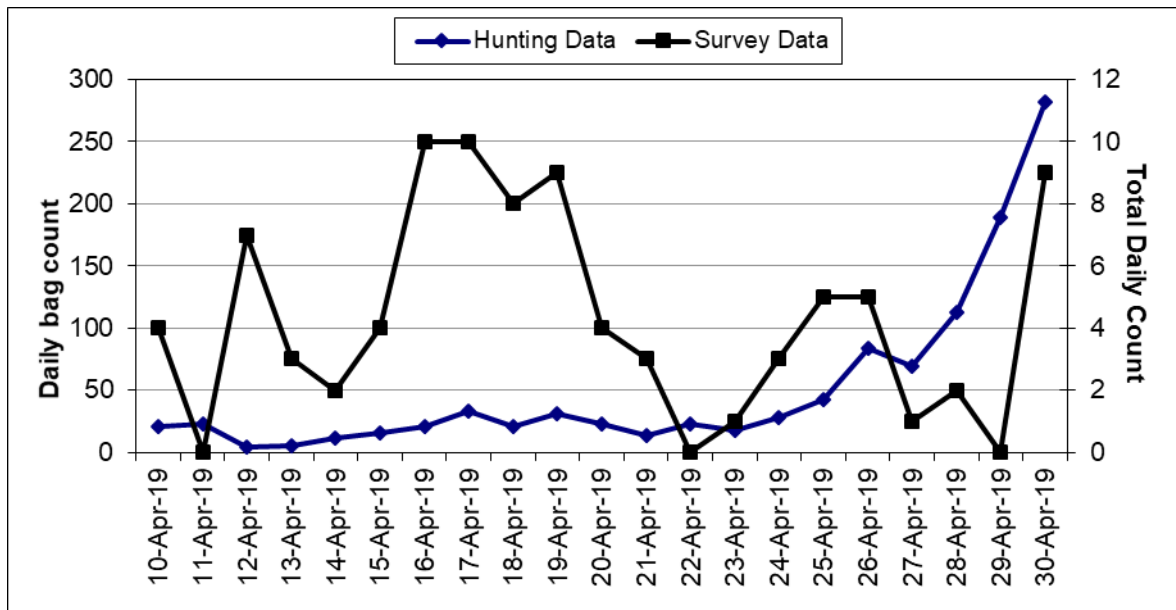


Figure 9. Daily bag count of Common Quail during 2019 (blue line; values on left-side y-axis), together with the total daily counts recorded during the 2019 survey (black line; values on right-side y-axis), for the period 10 – 30 April 2019.

## 5. Appraisal

---

The present survey provides data on counts of Turtle Dove and Common Quail recorded between 15 March and 15 May 2019, as well as estimates of the migratory influx of the two species. In 2019, the Government had established the open season for hunting of Common Quail between 10 and 30 April, which was covered by the period during which the present study was held.

For Turtle Dove, when comparing the results of the present survey with those from previous surveys, a similar trend of counts is noted overall. The general pattern is of very low counts recorded in March and early April, with marginally higher counts recorded from mid-April to early May, including peaks in some years. The daily mean counts recorded during the present survey were similar to those recorded in previous years. Occasional peaks were recorded in some years: in 2008, a very high mean count (98, on 15-4-08) and a secondary peak (26, on 20-04-08) were recorded, while a single main peak (25, on 19-04-18) was recorded in 2018; no mean counts greater than 20 were recorded in any of the other years, including during the present survey. The grand mean of Turtle Dove counts recorded during the period 15 March to 15 May from the present (2019) survey is 1.15, which is lower than the grand mean of 2.76 recorded over the same period in 2009. The grand mean recorded during the present (2019) survey during the period 10 to 30 April is similar to that recorded between 2014 and 2017, but lower than that recorded in other surveys, especially that from 2008.

The total influx of Turtle Dove for the present survey period (15 March to 15 May 2019) is estimated at 38,616 individuals. When compared to estimates made during previous surveys in spring (see Table 1), the estimate from the present survey (2019) is the third highest overall, the highest two being those made in 2012 and 2013. Nonetheless, the present survey covered a period of 62 days; apart from the 2012 survey (48 days), all other surveys covered a period of not more than 21 days. It is therefore reiterated that such estimates must be treated with utmost caution, given the relatively small number of field sites used on any one day, that counts were not made daily at each site, and since the extrapolation procedure used is likely to result in a rough estimate. Increasing the number of field sites per day is desirable since the influx of birds at different localities is extremely variable, with potential large differences in Turtle Dove passing at two different localities, even if these are separated by a very small distance. Furthermore, the length of coastline surveyed per day (4 km) amounts to less than 1.5% of the total coastline; the accuracy of the estimated total migratory influx would be higher if a larger proportion of coastline is surveyed. It should also be noted that the total coastline length used in the present extrapolation includes stretches of coast that are highly developed and densely inhabited, for example, the Sliema – Valletta and Cottonera areas, where one would expect some disturbance to birds migrating at low altitude, hence their numbers there would be expected to be lower, resulting in an overestimate. Another limitation is that the Turtle Dove migration counts were recorded over a seven hour survey period (07:00–14:00), hence any individuals migrating at other times of the day were not included, leading to a potential underestimate of the total influx if significant Turtle Dove migration occurred between 14:00 and 07:00. On the other hand, the 07:00–14:00 time period represents the time during which the activity of Turtle Dove is deemed maximum. Nevertheless, the stated estimate is useful when making comparison between different years, assuming data from surveys based on a similar design are available, to assess whether influx of Turtle Dove is increasing or decreasing with time. Furthermore, actual implementation of a survey such as the present poses huge logistical (including to recruit a sufficient number of suitable personnel for a relatively short duration) and cost constraints.

For Common Quail, when comparing the results of the present survey with those from previous surveys, a similar trend of counts is noted overall. The general pattern observed is of low migratory counts in mid-March which start to increase in late March, with the highest counts recorded in mid- to

end April, and a subsequent decline in counts during May. The daily mean counts recorded during the present survey were overall slightly lower than those obtained in 2009 (Thomaidis, nd) but similar to those recorded in 2008 (Thomaidis, nd) and 2011–2018 (Ecoserv 2013; 2014; 2015; 2016; 2017; 2018). Minor peaks of around 2.0–3.0 were recorded in spring 2008, 2009 and 2012, while no mean counts greater than 1.5 were recorded in any of the other years, including during the present survey. The grand mean of Common Quail counts recorded during the period 15 March to 15 May from the present (2019) survey is 0.25, which is lower than the grand mean of 0.74 recorded over the same period in 2009. The grand mean recorded during the present (2019) survey during the period 10 to 30 April is similar to that recorded in 2018, slightly higher than that recorded during the 2013–2017 surveys and lower than that recorded in 2008, 2009 and 2012.

The total influx of Common Quail for the present survey period (15 March to 15 May 2019) is estimated at 113,116 individuals. When compared to estimates made during previous surveys in spring (see Table 1), the estimate from the present survey (2019) is the highest overall. Nonetheless, the present survey covered a period of 62 days; apart from the 2012 survey (48 days), all other surveys covered a period of not more than 21 days. It is reiterated that such estimates must be treated with utmost caution, given the relatively small number of field sites used in the present survey, that counts were not made daily at each site, and since the extrapolation procedure used is likely to result in a rough estimate. The considerations emphasised above for Turtle Dove also apply to the Common Quail – birds may migrate along specific pathways, with the result that high numbers may be recorded at one site and a potentially much lower number at a different site, even if the two sites are separated by a very small distance of even a few hundred meters. Hence increasing the number of field sites per day to account for such variation in counts between different sites is desirable. Furthermore, the daily area surveyed for Common Quail amounts to less than 1% of the total area; the accuracy of the estimated total migratory influx would be higher if a larger area is surveyed.

The design of the present survey included counts made over a 62 day period between 15 March and 15 May 2019. While the peak migration of Turtle Dove and Common Quail usually occurs in the last three weeks of April, Turtle Dove migration can also extend to May and migratory peaks for Common Quail can occur in late March and early April. Therefore, the survey period used in the present survey is considered an improvement over the 21 day period used in most previous surveys, which only covered part of the migratory season.

For both Turtle Dove and Common Quail, a number of limitations, which have already been highlighted in Ecoserv (2011; 2012; 2013; 2014; 2015; 2016; 2017; 2018), are reiterated, namely:

- The data reported on in the present document can only be used for purposes of trend analysis, and even in this respect, due caution should be exercised given that the sampling effort used in the present 2019 study, while partly similar that reported and utilized by Thomaidis (nd) for the years 2008 and 2009, is not identical. Comparison with data collected by Ecoserv in previous surveys (2011, 2012, 2013, 2014, 2015, 2016, 2017, 2018) was limited to the periods covered by those surveys which, apart from 2012, were limited to just 21 days or less.
- Robust and rigorous assessment of migratory influx requires trend analysis based on data from monitoring carried out regularly over a sufficiently long period comprising subsequent years, and using the same methodology. For each year, the data should ideally be collected over the whole migratory season and using a larger sampling effort, for example by making counts daily at all of a minimum 28 sites.

Nevertheless, the data from the present study provides a useful indication of the influx of Turtle Dove and Common Quail, provided that results are interpreted in the context of the limitations detailed above.

## 6. References

---

Ecoserv (2011). Report on a survey of the influx of migratory Common Quail and Turtle Dove following the spring hunting open season in Malta, made in May 2011. Malta, unpublished report; 37pp.

Ecoserv (2012). Report on a survey of the influx of migratory Common Quail and Turtle Dove following the spring hunting open season in Malta, made in April – May 2012. Malta, unpublished report; 26pp.

Ecoserv (2013). Report on a survey of the influx of migratory Common Quail and Turtle Dove over the Maltese Islands, made in April 2013. Malta, unpublished report; 30pp.

Ecoserv (2014). Report on a survey of the influx of migratory Common Quail and Turtle Dove over the Maltese Islands, made in April 2014. Malta, unpublished report; 34pp.

Ecoserv (2015). Report on a survey of the influx of migratory Common Quail and Turtle Dove over the Maltese Islands, made in April 2015. Malta, unpublished report; 41pp.

Ecoserv (2016). Report on a survey of the influx of migratory Common Quail and Turtle Dove over the Maltese Islands, made in April 2016. Malta, unpublished report; 43pp.

Ecoserv (2017). Report on a survey of the influx of migratory Common Quail and Turtle Dove over the Maltese Islands, made in April 2017. Malta, unpublished report; 44pp.

Ecoserv (2018). Report on a survey of the influx of migratory Common Quail and Turtle Dove over the Maltese Islands, made in April 2018. Malta, unpublished report; 47pp.

Mallia, A., Briguglio, M., Ellul, A.E. and Formosa, S. (2002). Physical Background, Demography, Tourism, Mineral Resources and Land-Use. In: State of the Environment Report for Malta, 2002. Ministry for Home Affairs and the Environment; 120 pp.

MEPA (2010). The Environment Report 2008, Sub-Report 4: Land. Malta Environment and Planning Authority; 51 pp.

Thomaidis (nd). Study of the migration patterns of Turtle Dove *Streptopelia turtur* and quail *Coturnix coturnix* over the Maltese Islands. Technological Education Institute of Lamia, Department of Forestry and Management of Natural Environment, Kapenisi, Greece; 56 pp.

**APPENDIX I - Raw counts**

**Table A. Daily counts of Turtle Dove recorded per site.**

Ecoserv Sample Reference Code	B-037-19	B-038-19	B-039-19	B-040-19	B-041-19	B-042-19	B-043-19	B-044-19	B-045-19	B-046-19	B-047-19	B-048-19	B-049-19	B-050-19
Grid Location	4085	3887	2892	3881	4073	4268	4864	6067	5872	4678	3690	3286	4077	4075
15-Mar-19	0	0	0	0	0	0	0	0	0	0				
16-Mar-19	0										0	0	0	0
17-Mar-19	0													
18-Mar-19	0	0	0	0	0	0	0	0	0	0				
19-Mar-19	0										0	0	0	0
20-Mar-19	0													
21-Mar-19	0	0	0	0	3	0	0	0	0	0				
22-Mar-19	0										0	0	0	0
23-Mar-19	0													
24-Mar-19	0	0	0	0	0	1	0	0	0	0				
25-Mar-19	0										0	0	0	0
26-Mar-19	0													
27-Mar-19	0	0	0	0	0	2	0	0	0	0				
28-Mar-19	0										0	0	0	1
29-Mar-19	0													
30-Mar-19	0	1	0	0	0	0	0	0	0	0				
31-Mar-19	0										0	0	0	0
01-Apr-19	0													
02-Apr-19	0	0	0	0	0	2	0	0	0	0				
03-Apr-19	0										0	0	1	0
04-Apr-19	0													
05-Apr-19	0	0	0	0	2	0	0	1	0	0				
06-Apr-19	0										0	0	0	0

Ecoserv Sample Reference Code	B-037-19	B-038-19	B-039-19	B-040-19	B-041-19	B-042-19	B-043-19	B-044-19	B-045-19	B-046-19	B-047-19	B-048-19	B-049-19	B-050-19
Grid Location	4085	3887	2892	3881	4073	4268	4864	6067	5872	4678	3690	3286	4077	4075
07-Apr-19	1													
08-Apr-19	0	0	0	0	0	1	0	1	0	0				
09-Apr-19	0										2	0	0	0
10-Apr-19	0													
11-Apr-19	1	2	1	1	7	1	2	0	1	0				
12-Apr-19	2										2	0	6	0
13-Apr-19	3													
14-Apr-19	1	0	1	0	0	0	1	1	0	0				
15-Apr-19	0										0	0	0	0
16-Apr-19	0													
17-Apr-19	0	0	9	19	2	0	0	2	3	0				
18-Apr-19	7										3	20	2	1
19-Apr-19	1													
20-Apr-19	18	0	6	3	1	6	1	1	2	1				
21-Apr-19	0										2	1	0	2
22-Apr-19	0													
23-Apr-19	0	3	0	5	0	2	0	0	1	3				
24-Apr-19	0										2	4	1	2
25-Apr-19	1													
26-Apr-19	10	2	1	19	5	6	7	2	4	0				
27-Apr-19	1										0	1	2	0
28-Apr-19	1													
29-Apr-19	6	2	2	1	8	3	2	2	2	1				
30-Apr-19	0										1	1	3	2
01-May-19	0													
02-May-19	0	0	2	1	4	2	0	3	0	1				
03-May-19	0										3	0	2	1

Ecoserv Sample Reference Code	B-037-19	B-038-19	B-039-19	B-040-19	B-041-19	B-042-19	B-043-19	B-044-19	B-045-19	B-046-19	B-047-19	B-048-19	B-049-19	B-050-19
<b>Grid Location</b>	<b>4085</b>	<b>3887</b>	<b>2892</b>	<b>3881</b>	<b>4073</b>	<b>4268</b>	<b>4864</b>	<b>6067</b>	<b>5872</b>	<b>4678</b>	<b>3690</b>	<b>3286</b>	<b>4077</b>	<b>4075</b>
04-May-19	5													
05-May-19	0	1	2	0	6	3	0	2	0	0				
06-May-19	5										3	1	3	6
07-May-19	0													
08-May-19	0	0	4	0	3	2	1	2	0	2				
09-May-19	0										0	0	4	3
10-May-19	3													
11-May-19	0	0	0	1	2	0	1	0	0	0				
12-May-19	0										0	0	0	0
13-May-19	0													
14-May-19	0	1	0	0	1	0	0	1	0	2				
15-May-19	0										0	0	3	2

**Table A continued. Daily counts of Turtle Dove recorded per site.**

Ecoserv Sample Reference Code	B-051-19	B-052-19	B-053-19	B-054-19	B-055-19	B-056-19	B-057-19	B-058-19	B-059-19	B-060-19	B-061-19	B-062-19	B-063-19	B-064-19
<b>Grid Location</b>	<b>5263</b>	<b>5663</b>	<b>5871</b>	<b>5277</b>	<b>4480</b>	<b>3292</b>	<b>2888</b>	<b>4079</b>	<b>4070</b>	<b>4666</b>	<b>6064</b>	<b>6069</b>	<b>4878</b>	<b>4283</b>
15-Mar-19														
16-Mar-19	1	0	0	0	0									
17-Mar-19						0	0	0	1	0	0	0	0	0
18-Mar-19														
19-Mar-19	0	0	0	0	0									
20-Mar-19						0	0	0	0	0	0	0	0	0
21-Mar-19														
22-Mar-19	0	0	0	0	0									

Ecoserv Sample Reference Code	B-051-19	B-052-19	B-053-19	B-054-19	B-055-19	B-056-19	B-057-19	B-058-19	B-059-19	B-060-19	B-061-19	B-062-19	B-063-19	B-064-19
Grid Location	5263	5663	5871	5277	4480	3292	2888	4079	4070	4666	6064	6069	4878	4283
23-Mar-19						0	0	0	6	0	0	0	0	0
24-Mar-19														
25-Mar-19	0	0	0	0	0									
26-Mar-19						0	0	0	0	0	0	0	0	0
27-Mar-19														
28-Mar-19	1	0	0	0	0									
29-Mar-19						0	1	0	0	0	0	0	0	0
30-Mar-19														
31-Mar-19	0	0	0	3	0									
01-Apr-19						0	0	0	0	0	0	0	0	0
02-Apr-19														
03-Apr-19	0	1	0	0	0									
04-Apr-19						0	0	0	1	0	0	0	0	0
05-Apr-19														
06-Apr-19	1	0	0	0	2									
07-Apr-19						0	0	0	0	0	0	0	0	0
08-Apr-19														
09-Apr-19	0	4	0	0	1									
10-Apr-19						1	1	2	1	1	0	1	1	0
11-Apr-19														
12-Apr-19	0	0	0	0	0									
13-Apr-19						0	1	1	0	0	1	0	1	0
14-Apr-19														
15-Apr-19	1	0	4	2	0									
16-Apr-19						3	3	0	2	12	11	0	1	3
17-Apr-19														
18-Apr-19	0	2	7	0	4									

Ecoserv Sample Reference Code	B-051-19	B-052-19	B-053-19	B-054-19	B-055-19	B-056-19	B-057-19	B-058-19	B-059-19	B-060-19	B-061-19	B-062-19	B-063-19	B-064-19
Grid Location	5263	5663	5871	5277	4480	3292	2888	4079	4070	4666	6064	6069	4878	4283
19-Apr-19						9	1	3	7	2	4	0	0	2
20-Apr-19														
21-Apr-19	0	1	0	2	0									
22-Apr-19						3	0	0	0	0	0	0	0	1
23-Apr-19														
24-Apr-19	2	3	0	1	2									
25-Apr-19						1	4	5	7	7	6	0	2	4
26-Apr-19														
27-Apr-19	0	0	1	0	0									
28-Apr-19						1	0	0	2	0	4	3	0	1
29-Apr-19														
30-Apr-19	1	0	3	0	3									
01-May-19						3	3	6	3	0	7	7	16	2
02-May-19														
03-May-19	0	1	1	0	1									
04-May-19						3	3	0	5	0	5	0	11	18
05-May-19														
06-May-19	3	0	0	2	3									
07-May-19						0	0	1	1	0	0	0	4	7
08-May-19														
09-May-19	0	0	4	0	4									
10-May-19						1	0	0	0	1	0	0	3	3
11-May-19														
12-May-19	0	0	1	5	0									
13-May-19						1	0	0	0	1	0	0	0	0
14-May-19														
15-May-19	0	0	1	2	1									

**Table B. Daily counts of Common Quail recorded per site, together with the area surveyed at each site.**

Ecoserv Sample Reference Code	B-065-19	B-066-19	B-067-19	B-068-19	B-069-19	B-070-19	B-071-19	B-072-19	B-073-19	B-074-19	B-075-19	B-076-19	B-077-19	B-078-19
Grid Location	4085	3887	2892	3881	4073	4268	4864	6067	5872	4678	3690	3286	4077	4075
Surveyed Area (km <sup>2</sup> )	0.037	0.015	0.018	0.035	0.016	0.036	0.022	0.019	0.025	0.031	0.034	0.168	0.040	0.004
15-Mar-19	0	0	0	0	0	0	0	0	0	0				
16-Mar-19	0										0	0	0	2
17-Mar-19	0													
18-Mar-19	0	0	0	0	1	1	0	0	0	0				
19-Mar-19	0										0	0	0	0
20-Mar-19	0													
21-Mar-19	0	0	0	0	0	0	0	0	0	0				
22-Mar-19	0										0	0	0	0
23-Mar-19	0													
24-Mar-19	0	0	0	0	0	2	0	1	0	2				
25-Mar-19	0										0	0	0	0
26-Mar-19	0													
27-Mar-19	0	0	0	0	0	0	0	1	0	0				
28-Mar-19	0										0	0	0	1
29-Mar-19	0													
30-Mar-19	0	0	0	0	1	2	0	0	1	0				
31-Mar-19	0										0	0	0	0
01-Apr-19	0													
02-Apr-19	0	0	0	0	0	0	0	0	0	1				
03-Apr-19	0										0	0	0	0
04-Apr-19	0													
05-Apr-19	0	1	0	0	5	0	0	0	1	0				

Ecoserv Sample Reference Code	B-065-19	B-066-19	B-067-19	B-068-19	B-069-19	B-070-19	B-071-19	B-072-19	B-073-19	B-074-19	B-075-19	B-076-19	B-077-19	B-078-19
Grid Location	4085	3887	2892	3881	4073	4268	4864	6067	5872	4678	3690	3286	4077	4075
06-Apr-19	0										0	0	0	1
07-Apr-19	0													
08-Apr-19	0	0	0	0	0	3	0	0	0	0				
09-Apr-19	0										0	0	1	0
10-Apr-19	0													
11-Apr-19	0	0	0	0	0	0	0	0	0	0				
12-Apr-19	0										0	0	1	3
13-Apr-19	0													
14-Apr-19	0	0	0	0	0	0	1	0	0	1				
15-Apr-19	0										0	1	0	0
16-Apr-19	0													
17-Apr-19	0	1	4	2	1	1	0	0	1	0				
18-Apr-19	0										2	2	2	2
19-Apr-19	0													
20-Apr-19	1	0	0	0	0	1	0	1	1	0				
21-Apr-19	0										0	0	1	0
22-Apr-19	0													
23-Apr-19	0	0	1	0	0	0	0	0	0	0				
24-Apr-19	0										0	0	0	0
25-Apr-19	0													
26-Apr-19	0	0	1	0	3	1	0	0	0	0				
27-Apr-19	1										0	0	0	0
28-Apr-19	0													
29-Apr-19	0	0	0	0	0	0	0	0	0	0				
30-Apr-19	0										2	0	0	1
01-May-19	0													
02-May-19	0	0	0	0	0	0	1	0	0	0				

Ecoserv Sample Reference Code	B-065-19	B-066-19	B-067-19	B-068-19	B-069-19	B-070-19	B-071-19	B-072-19	B-073-19	B-074-19	B-075-19	B-076-19	B-077-19	B-078-19
<b>Grid Location</b>	<b>4085</b>	<b>3887</b>	<b>2892</b>	<b>3881</b>	<b>4073</b>	<b>4268</b>	<b>4864</b>	<b>6067</b>	<b>5872</b>	<b>4678</b>	<b>3690</b>	<b>3286</b>	<b>4077</b>	<b>4075</b>
03-May-19	0										0	0	1	0
04-May-19	0													
05-May-19	0	2	0	0	0	0	0	0	0	0				
06-May-19	0										1	0	0	0
07-May-19	0													
08-May-19	0	0	0	0	0	0	0	0	1	0				
09-May-19	0										0	0	0	0
10-May-19	0													
11-May-19	0	0	0	0	0	0	0	0	0	0				
12-May-19	0										0	0	0	0
13-May-19	0													
14-May-19	0	0	0	0	0	0	0	0	0	0				
15-May-19	0										0	1	0	0

**Table B continued. Daily counts of Common Quail recorded per site, together with the area surveyed at each site.**

Ecoserv Sample Reference Code	B-079-19	B-080-19	B-081-19	B-082-19	B-083-19	B-084-19	B-085-19	B-086-19	B-087-19	B-088-19	B-089-19	B-090-19	B-091-19	B-092-19
<b>Grid Location</b>	<b>5263</b>	<b>5663</b>	<b>5871</b>	<b>5277</b>	<b>4480</b>	<b>3292</b>	<b>2888</b>	<b>4079</b>	<b>4070</b>	<b>4666</b>	<b>6064</b>	<b>6069</b>	<b>4878</b>	<b>4283</b>
<b>Surveyed Area (km<sup>2</sup>)</b>	0.050	0.031	0.022	0.054	0.031	0.048	0.015	0.052	0.012	0.021	0.023	0.032	0.017	0.046
15-Mar-19														
16-Mar-19	0	0	0	0	0									
17-Mar-19						1	0	0	1	1	0	0	0	0
18-Mar-19														

Ecoserv Sample Reference Code	B-079-19	B-080-19	B-081-19	B-082-19	B-083-19	B-084-19	B-085-19	B-086-19	B-087-19	B-088-19	B-089-19	B-090-19	B-091-19	B-092-19
Grid Location	5263	5663	5871	5277	4480	3292	2888	4079	4070	4666	6064	6069	4878	4283
19-Mar-19	0	0	0	0	0									
20-Mar-19						1	0	0	1	0	0	0	0	0
21-Mar-19														
22-Mar-19	0	0	0	0	0									
23-Mar-19						0	0	0	0	0	0	0	0	0
24-Mar-19														
25-Mar-19	0	0	1	0	0									
26-Mar-19						2	0	0	0	1	0	0	0	0
27-Mar-19														
28-Mar-19	1	0	0	0	0									
29-Mar-19						1	0	0	0	0	0	0	0	0
30-Mar-19														
31-Mar-19	1	0	0	0	0									
01-Apr-19						2	0	0	1	2	0	0	0	0
02-Apr-19														
03-Apr-19	0	0	0	0	1									
04-Apr-19						1	0	0	1	0	1	0	0	0
05-Apr-19														
06-Apr-19	0	0	0	1	0									
07-Apr-19						0	2	0	0	0	0	0	1	0
08-Apr-19														
09-Apr-19	0	0	1	0	0									
10-Apr-19						1	0	0	2	0	1	0	0	0
11-Apr-19														
12-Apr-19	1	1	0	1	0									
13-Apr-19						0	1	0	1	0	0	1	0	0
14-Apr-19														

Ecoserv Sample Reference Code	B-079-19	B-080-19	B-081-19	B-082-19	B-083-19	B-084-19	B-085-19	B-086-19	B-087-19	B-088-19	B-089-19	B-090-19	B-091-19	B-092-19
Grid Location	5263	5663	5871	5277	4480	3292	2888	4079	4070	4666	6064	6069	4878	4283
15-Apr-19	0	0	0	3	0									
16-Apr-19						0	0	2	3	2	1	1	1	0
17-Apr-19														
18-Apr-19	0	0	0	0	0									
19-Apr-19						1	0	2	3	0	0	1	0	2
20-Apr-19														
21-Apr-19	0	0	0	1	1									
22-Apr-19						0	0	0	0	0	0	0	0	0
23-Apr-19														
24-Apr-19	0	0	0	3	0									
25-Apr-19						1	0	1	0	0	0	0	3	0
26-Apr-19														
27-Apr-19	0	0	0	0	0									
28-Apr-19						0	0	1	0	0	0	0	1	0
29-Apr-19														
30-Apr-19	2	1	0	3	0									
01-May-19						0	0	0	0	0	0	0	0	0
02-May-19														
03-May-19	0	0	0	0	0									
04-May-19						0	0	0	0	0	0	0	0	0
05-May-19														
06-May-19	0	0	0	0	0									
07-May-19						0	0	0	2	0	0	0	1	0
08-May-19														
09-May-19	0	0	0	0	0									
10-May-19						0	0	0	0	0	0	0	1	0
11-May-19														

<b>Ecoserv Sample Reference Code</b>	<b>B-079-19</b>	<b>B-080-19</b>	<b>B-081-19</b>	<b>B-082-19</b>	<b>B-083-19</b>	<b>B-084-19</b>	<b>B-085-19</b>	<b>B-086-19</b>	<b>B-087-19</b>	<b>B-088-19</b>	<b>B-089-19</b>	<b>B-090-19</b>	<b>B-091-19</b>	<b>B-092-19</b>
<b>Grid Location</b>	<b>5263</b>	<b>5663</b>	<b>5871</b>	<b>5277</b>	<b>4480</b>	<b>3292</b>	<b>2888</b>	<b>4079</b>	<b>4070</b>	<b>4666</b>	<b>6064</b>	<b>6069</b>	<b>4878</b>	<b>4283</b>
12-May-19	0	0	0	0	0									
13-May-19						0	0	0	0	0	0	0	0	0
14-May-19														
15-May-19	0	0	0	0	0									

**APPENDIX II - The daily observation times by the field observers spent at each Common Quail monitoring station**

Date	Location	Observation time	Date	Location	Observation time
15 March 2019	Comino	07:00 – 09:00	19 March 2019	Comino	07:30 – 09:30
15 March 2019	Gozo: Qala	07:30 – 09:30	19 March 2019	Gozo: San Blas	07:00 – 09:00
15 March 2019	Gozo: Wied il-Mielah	07:00 – 09:00	19 March 2019	Gozo: Ta' Cenc	07:00 – 09:00
15 March 2019	Cirkewwa / Torri l-Ahmar	07:30 – 09:30	19 March 2019	Ghajn Tuffieha	07:30 – 09:30
15 March 2019	Fomm ir-Rih	08:00 – 10:00	19 March 2019	Gnejna	08:00 – 10:00
15 March 2019	Rdum ta' Had-Dingli	08:00 – 10:00	19 March 2019	Zurrieq	08:30 – 10:30
15 March 2019	Lapsi	11:00 – 12:00	19 March 2019	Ghar Hasan	07:00 – 09:00
15 March 2019	San Tumas	09:30 – 11:30	19 March 2019	Xghajra Ta' Barkat	07:00 – 09:00
15 March 2019	Rinella	09:00 – 11:00	19 March 2019	White Rocks	08:15 – 10:15
15 March 2019	Wardija	10:30 – 12:30	19 March 2019	Mistra / Mgiebah	07:30 – 09:30
16 March 2019	Comino	07:30 – 09:30	20 March 2019	Comino	10:00 – 12:00
16 March 2019	Gozo: San Blas	07:00 – 09:00	20 March 2019	Gozo: Marsalforn	07:30 – 09:30
16 March 2019	Gozo: Ta' Cenc	07:00 – 09:00	20 March 2019	Gozo: Ghadira ta' Sarraflu	08:00 – 10:00
16 March 2019	Ghajn Tuffieha	08:00 – 10:00	20 March 2019	Anchor Bay / Rdum taht il-Mellieha	07:30 – 09:30
16 March 2019	Gnejna	07:00 – 09:00	20 March 2019	Mtahleb to Migra l-Ferha	07:00 – 09:00
16 March 2019	Zurrieq	07:30 – 09:30	20 March 2019	Fawwara	08:00 – 10:00
16 March 2019	Ghar Hasan	07:00 – 09:00	20 March 2019	Delimara Point	07:30 – 09:30
16 March 2019	Xghajra Ta' Barkat	08:00 – 10:00	20 March 2019	Zonqor Point	07:00 – 09:00
16 March 2019	White Rocks	08:00 – 10:00	20 March 2019	Ghallis	08:30 – 10:30
16 March 2019	Mistra / Mgiebah	08:00 – 10:00	20 March 2019	L-Ahrax tal-Mellieha	08:00 – 10:00
17 March 2019	Comino	07:30 – 09:30	21 March 2019	Comino	07:00 – 09:00
17 March 2019	Gozo: Marsalforn	07:00 – 09:00	21 March 2019	Gozo: Qala	07:30 – 09:30
17 March 2019	Gozo: Ghadira ta' Sarraflu	08:00 – 10:00	21 March 2019	Gozo: Wied il-Mielah	08:00 – 10:00
17 March 2019	Anchor Bay / Rdum taht il-Mellieha	07:30 – 09:30	21 March 2019	Cirkewwa / Torri l-Ahmar	08:00 – 10:00
17 March 2019	Mtahleb to Migra l-Ferha	07:30 – 09:30	21 March 2019	Fomm ir-Rih	07:00 – 09:00
17 March 2019	Fawwara	07:30 – 09:30	21 March 2019	Rdum ta' Had-Dingli	09:00 – 10:30
17 March 2019	Delimara Point	07:30 – 09:30	21 March 2019	Lapsi	09:00 – 11:00
17 March 2019	Zonqor Point	08:00 – 10:00	21 March 2019	San Tumas	08:00 – 10:00
17 March 2019	Ghallis	07:30 – 09:30	21 March 2019	Rinella	07:00 – 09:00
17 March 2019	L-Ahrax tal-Mellieha	08:00 – 10:00	21 March 2019	Wardija	08:00 – 10:00
18 March 2019	Comino	07:30 – 09:30	22 March 2019	Comino	07:00 – 09:00
18 March 2019	Gozo: Qala	07:30 – 09:30	22 March 2019	Gozo: San Blas	07:30 – 09:30
18 March 2019	Gozo: Wied il-Mielah	08:00 – 10:00	22 March 2019	Gozo: Ta' Cenc	07:30 – 09:30
18 March 2019	Cirkewwa / Torri l-Ahmar	08:00 – 10:00	22 March 2019	Ghajn Tuffieha	08:00 – 09:00 10:00 – 11:00
18 March 2019	Fomm ir-Rih	07:00 – 09:10	22 March 2019	Gnejna	07:30 – 09:30
18 March 2019	Rdum ta' Had-Dingli	07:00 – 09:00	22 March 2019	Zurrieq	07:00 – 09:00
18 March 2019	Lapsi	08:00 – 10:00	22 March 2019	Ghar Hasan	08:00 – 10:00
18 March 2019	San Tumas	08:00 – 10:00	22 March 2019	Xghajra Ta' Barkat	07:30 – 09:30
18 March 2019	Rinella	07:00 – 09:00	22 March 2019	White Rocks	08:30 – 10:30
18 March 2019	Wardija	08:00 – 10:00	22 March 2019	Mistra / Mgiebah	08:00 – 10:00

APPENDIX II continued.

Date	Location	Observation time	Date	Location	Observation time
23 March 2019	Comino	07:30 – 09:30	27 March 2019	Comino	07:30 – 09:30
23 March 2019	Gozo: Marsalforn	07:00 – 09:00	27 March 2019	Gozo: Qala	07:00 – 09:00
23 March 2019	Gozo: Ghadira ta' Sarraflu	08:00 – 10:00	27 March 2019	Gozo: Wied il-Mielah	07:00 – 09:00
23 March 2019	Anchor Bay / Rdum taht il-Mellieha	07:00 – 09:00	27 March 2019	Cirkewwa / Torri l-Ahmar	11:30 – 12:30
23 March 2019	Mtahleb to Migra l-Ferha	07:15 – 09:15	27 March 2019	Fomm ir-Rih	07:00 – 09:00
23 March 2019	Fawwara	07:30 – 09:30	27 March 2019	Rdum ta' Had-Dingli	10:00 – 11:00
23 March 2019	Delimara Point	8:00 – 10:00	27 March 2019	Lapsi	07:30 – 09:30
23 March 2019	Zonqor Point	07:00 – 09:00	27 March 2019	San Tumas	07:00 – 09:00
23 March 2019	Ghallis	08:00 – 10:00	27 March 2019	Rinella	11:00 – 13:00
23 March 2019	L-Ahrax tal-Mellieha	07:45 – 09:45	27 March 2019	Wardija	08:00 – 10:00
24 March 2019	Comino	07:00 – 09:00	28 March 2019	Comino	07:00 – 09:00
24 March 2019	Gozo: Qala	07:00 – 09:00	28 March 2019	Gozo: San Blas	07:30 – 09:30
24 March 2019	Gozo: Wied il-Mielah	07:30 – 09:30	28 March 2019	Gozo: Ta' Cenc	07:30 – 09:30
24 March 2019	Cirkewwa / Torri l-Ahmar	07:30 – 09:30	28 March 2019	Ghajn Tuffieha	09:00 – 11:00
24 March 2019	Fomm ir-Rih	07:30 – 09:30	28 March 2019	Gnejna	07:00 – 09:00
24 March 2019	Rdum ta' Had-Dingli	08:00 – 10:00	28 March 2019	Zurrieq	07:30 – 09:30
24 March 2019	Lapsi	08:00 – 10:00	28 March 2019	Ghar Hasan	07:00 – 09:00
24 March 2019	San Tumas	09:00 – 11:00	28 March 2019	Xghajra Ta' Barkat	07:00 – 09:00
24 March 2019	Rinella	08:00 – 10:00	28 March 2019	White Rocks	07:30 – 09:30
24 March 2019	Wardija	08:00 – 10:00	28 March 2019	Mistra / Mgiebah	07:30 – 09:30
25 March 2019	Comino	07:30 – 09:30	29 March 2019	Comino	08:00 – 10:00
25 March 2019	Gozo: San Blas	07:30 – 09:30	29 March 2019	Gozo: Marsalforn	08:00 – 10:00
25 March 2019	Gozo: Ta' Cenc	07:30 – 09:30	29 March 2019	Gozo: Ghadira ta' Sarraflu	07:00 – 09:00
25 March 2019	Ghajn Tuffieha	09:00 – 11:00	29 March 2019	Anchor Bay / Rdum taht il-Mellieha	07:30 – 09:30
25 March 2019	Gnejna	08:00 – 10:00	29 March 2019	Mtahleb to Migra l-Ferha	07:00 – 09:00
25 March 2019	Zurrieq	07:30 – 09:30	29 March 2019	Fawwara	08:30 – 10:30
25 March 2019	Ghar Hasan	07:30 – 09:30	29 March 2019	Delimara Point	08:00 – 10:00
25 March 2019	Xghajra Ta' Barkat	07:00 – 09:00	29 March 2019	Zonqor Point	07:00 – 09:00
25 March 2019	White Rocks	08:00 – 10:00	29 March 2019	Ghallis	07:30 – 09:30
25 March 2019	Mistra / Mgiebah	07:00 – 09:00	29 March 2019	L-Ahrax tal-Mellieha	07:30 – 09:30
26 March 2019	Comino	07:00 – 09:00	30 March 2019	Comino	07:00 – 09:00
26 March 2019	Gozo: Marsalforn	07:00 – 09:00	30 March 2019	Gozo: Qala	08:00 – 10:00
26 March 2019	Gozo: Ghadira ta' Sarraflu	07:00 – 09:00	30 March 2019	Gozo: Wied il-Mielah	07:30 – 09:30
26 March 2019	Anchor Bay / Rdum taht il-Mellieha	07:30 – 09:30	30 March 2019	Cirkewwa / Torri l-Ahmar	08:00 – 10:00
26 March 2019	Mtahleb to Migra l-Ferha	07:00 – 09:00	30 March 2019	Fomm ir-Rih	07:30 – 09:30
26 March 2019	Fawwara	08:00 – 10:00	30 March 2019	Rdum ta' Had-Dingli	08:00 – 10:00
26 March 2019	Delimara Point	07:00 – 09:00	30 March 2019	Lapsi	08:00 – 10:00
26 March 2019	Zonqor Point	07:00 – 09:00	30 March 2019	San Tumas	08:30 – 10:30
26 March 2019	Ghallis	08:00 – 10:00	30 March 2019	Rinella	07:30 – 09:30
26 March 2019	L-Ahrax tal-Mellieha	07:30 – 09:30	30 March 2019	Wardija	07:45 – 09:45

**APPENDIX II continued.**

Date	Location	Observation time	Date	Location	Observation time
31 March 2019	Comino	07:00 – 09:00	4 April 2019	Comino	07:00 – 09:00
31 March 2019	Gozo: San Blas	07:30 – 09:30	4 April 2019	Gozo: Marsalforn	07:30 – 09:30
31 March 2019	Gozo: Ta' Cenc	07:00 – 09:00	4 April 2019	Gozo: Ghadira ta' Sarraflu	07:00 – 09:00
31 March 2019	Ghajn Tuffieha	07:30 – 09:30	4 April 2019	Anchor Bay / Rdum taht il-Mellieha	08:00 – 10:00
31 March 2019	Gnejna	07:00 – 09:00	4 April 2019	Mtahleb to Migra l-Ferha	07:30 – 09:30
31 March 2019	Zurrieq	09:00 – 11:00	4 April 2019	Fawwara	08:00 – 10:00
31 March 2019	Ghar Hasan	08:00 – 10:00	4 April 2019	Delimara Point	08:00 – 10:00
31 March 2019	Xghajra Ta' Barkat	07:30 – 09:30	4 April 2019	Zonqor Point	07:00 – 09:00
31 March 2019	White Rocks	07:30 – 09:30	4 April 2019	Ghallis	08:00 – 10:00
31 March 2019	Mistra / Mgiebah	07:30 – 09:30	4 April 2019	L-Ahrax tal-Mellieha	09:00 – 11:00
1 April 2019	Comino	07:30 – 09:30	5 April 2019	Comino	07:30 – 09:30
1 April 2019	Gozo: Marsalforn	07:30 – 09:30	5 April 2019	Gozo: Qala	07:45 – 09:45
1 April 2019	Gozo: Ghadira ta' Sarraflu	07:00 – 09:00	5 April 2019	Gozo: Wied il-Mielah	07:00 – 09:00
1 April 2019	Anchor Bay / Rdum taht il-Mellieha	09:00 – 11:00	5 April 2019	Cirkewwa / Torri l-Ahmar	07:00 – 09:00
1 April 2019	Mtahleb to Migra l-Ferha	09:00 – 11:00	5 April 2019	Fomm ir-Rih	08:00 – 10:00
1 April 2019	Fawwara	07:30 – 09:30	5 April 2019	Rdum ta' Had-Dingli	07:30 – 09:30
1 April 2019	Delimara Point	07:00 – 09:00	5 April 2019	Lapsi	09:00 – 11:00
1 April 2019	Zonqor Point	07:30 – 09:30	5 April 2019	San Tumas	07:00 – 09:00
1 April 2019	Ghallis	07:30 – 09:30	5 April 2019	Rinella	08:00 – 10:00
1 April 2019	L-Ahrax tal-Mellieha	08:00 – 10:00	5 April 2019	Wardija	08:15 – 10:15
2 April 2019	Comino	07:00 – 09:00	6 April 2019	Comino	07:00 – 09:00
2 April 2019	Gozo: Qala	08:00 – 10:00	6 April 2019	Gozo: San Blas	07:00 – 09:00
2 April 2019	Gozo: Wied il-Mielah	07:30 – 09:30	6 April 2019	Gozo: Ta' Cenc	07:30 – 09:30
2 April 2019	Cirkewwa / Torri l-Ahmar	07:30 – 09:30	6 April 2019	Ghajn Tuffieha	08:00 – 10:00
2 April 2019	Fomm ir-Rih	07:30 – 09:30	6 April 2019	Gnejna	07:45 – 09:45
2 April 2019	Rdum ta' Had-Dingli	10:00 – 12:00	6 April 2019	Zurrieq	07:30 – 09:30
2 April 2019	Lapsi	07:00 – 09:00	6 April 2019	Ghar Hasan	07:15 – 09:15
2 April 2019	San Tumas	10:00 – 12:00	6 April 2019	Xghajra Ta' Barkat	07:30 – 09:30
2 April 2019	Rinella	07:00 – 09:00	6 April 2019	White Rocks	07:30 – 09:30
2 April 2019	Wardija	08:00 – 10:00	6 April 2019	Mistra / Mgiebah	07:00 – 09:00
3 April 2019	Comino	07:00 – 09:00	7 April 2019	Comino	07:00 – 09:00
3 April 2019	Gozo: San Blas	08:00 – 10:00	7 April 2019	Gozo: Marsalforn	09:00 – 11:00
3 April 2019	Gozo: Ta' Cenc	07:00 – 09:00	7 April 2019	Gozo: Ghadira ta' Sarraflu	07:30 – 09:30
3 April 2019	Ghajn Tuffieha	07:30 – 09:30	7 April 2019	Anchor Bay / Rdum taht il-Mellieha	07:50 – 09:50
3 April 2019	Gnejna	08:00 – 10:00	7 April 2019	Mtahleb to Migra l-Ferha	07:00 – 09:00
3 April 2019	Zurrieq	07:30 – 09:30	7 April 2019	Fawwara	08:00 – 10:00
3 April 2019	Ghar Hasan	08:00 – 10:00	7 April 2019	Delimara Point	08:00 – 10:00
3 April 2019	Xghajra Ta' Barkat	07:00 – 09:00	7 April 2019	Zonqor Point	07:30 – 09:30
3 April 2019	White Rocks	07:15 – 09:15	7 April 2019	Ghallis	07:00 – 09:00
3 April 2019	Mistra / Mgiebah	08:00 – 10:00	7 April 2019	L-Ahrax tal-Mellieha	07:30 – 09:30

**APPENDIX II continued.**

Date	Location	Observation time	Date	Location	Observation time
8 April 2019	Comino	08:00 – 10:00	12 April 2019	Comino	07:30 – 09:30
8 April 2019	Gozo: Qala	07:00 – 09:00	12 April 2019	Gozo: San Blas	08:00 – 10:00
8 April 2019	Gozo: Wied il-Mielah	07:00 – 09:00	12 April 2019	Gozo: Ta' Cenc	07:30 – 09:30
8 April 2019	Cirkewwa / Torri l-Ahmar	07:30 – 09:30	12 April 2019	Ghajn Tuffieha	07:00 – 09:00
8 April 2019	Fomm ir-Rih	07:30 – 09:30	12 April 2019	Gnejna	09:00 – 11:00
8 April 2019	Rdum ta' Had-Dingli	10:00 – 12:00	12 April 2019	Zurrieq	08:00 – 10:00
8 April 2019	Lapsi	08:00 – 10:00	12 April 2019	Ghar Hasan	08:00 – 10:00
8 April 2019	San Tumas	09:30 – 11:30	12 April 2019	Xghajra Ta' Barkat	07:30 – 09:30
8 April 2019	Rinella	07:00 – 09:00	12 April 2019	White Rocks	07:30 – 09:30
8 April 2019	Wardija	08:00 – 10:00	12 April 2019	Mistra / Mgiebah	07:30 – 09:30
9 April 2019	Comino	08:00 – 10:00	13 April 2019	Comino	07:30 – 09:30
9 April 2019	Gozo: San Blas	07:30 – 09:30	13 April 2019	Gozo: Marsalforn	07:00 – 09:00
9 April 2019	Gozo: Ta' Cenc	08:00 – 10:00	13 April 2019	Gozo: Ghadira ta' Sarraflu	08:00 – 10:00
9 April 2019	Ghajn Tuffieha	07:00 – 09:00	13 April 2019	Anchor Bay / Rdum taht il-Mellieha	07:30 – 09:30
9 April 2019	Gnejna	07:00 – 09:00	13 April 2019	Mtahleb to Migra l-Ferha	08:00 – 10:00
9 April 2019	Zurrieq	07:00 – 09:00	13 April 2019	Fawwara	10:00 – 12:00
9 April 2019	Ghar Hasan	07:00 – 09:00	13 April 2019	Delimara Point	09:00 – 11:00
9 April 2019	Xghajra Ta' Barkat	07:00 – 09:00	13 April 2019	Zonqor Point	07:30 – 09:30
9 April 2019	White Rocks	07:00 – 09:00	13 April 2019	Ghallis	08:00 – 10:00
9 April 2019	Mistra / Mgiebah	07:30 – 09:30	13 April 2019	L-Ahrax tal-Mellieha	07:45 – 09:45
10 April 2019	Comino	07:00 – 09:00	14 April 2019	Comino	07:00 – 09:00
10 April 2019	Gozo: Marsalforn	07:30 – 09:30	14 April 2019	Gozo: Qala	07:00 – 09:00
10 April 2019	Gozo: Ghadira ta' Sarraflu	07:00 – 09:00	14 April 2019	Gozo: Wied il-Mielah	07:30 – 09:30
10 April 2019	Anchor Bay / Rdum taht il-Mellieha	08:30 – 10:30	14 April 2019	Cirkewwa / Torri l-Ahmar	07:30 – 09:30
10 April 2019	Mtahleb to Migra l-Ferha	09:00 – 11:00	14 April 2019	Fomm ir-Rih	07:30 – 09:30
10 April 2019	Fawwara	08:30 – 10:30	14 April 2019	Rdum ta' Had-Dingli	07:45 – 09:45
10 April 2019	Delimara Point	08:15 – 10:15	14 April 2019	Lapsi	07:00 – 09:00
10 April 2019	Zonqor Point	07:00 – 09:00	14 April 2019	San Tumas	08:30 – 10:30
10 April 2019	Ghallis	08:00 – 10:00	14 April 2019	Rinella	07:30 – 09:30
10 April 2019	L-Ahrax tal-Mellieha	07:00 – 09:00	14 April 2019	Wardija	07:30 – 09:30
11 April 2019	Comino	09:00 – 11:00	15 April 2019	Comino	07:00 – 09:00
11 April 2019	Gozo: Qala	07:30 – 09:30	15 April 2019	Gozo: San Blas	07:30 – 09:30
11 April 2019	Gozo: Wied il-Mielah	07:00 – 09:00	15 April 2019	Gozo: Ta' Cenc	08:00 – 10:00
11 April 2019	Cirkewwa / Torri l-Ahmar	08:00 – 10:00	15 April 2019	Ghajn Tuffieha	08:00 – 10:00
11 April 2019	Fomm ir-Rih	08:00 – 10:00	15 April 2019	Gnejna	07:30 – 09:30
11 April 2019	Rdum ta' Had-Dingli	07:30 – 09:30	15 April 2019	Zurrieq	07:45 – 09:45
11 April 2019	Lapsi	07:00 – 09:00	15 April 2019	Ghar Hasan	08:00 – 10:00
11 April 2019	San Tumas	08:00 – 10:00	15 April 2019	Xghajra Ta' Barkat	07:00 – 09:00
11 April 2019	Rinella	07:00 – 09:00	15 April 2019	White Rocks	07:00 – 09:00
11 April 2019	Wardija	07:45 – 09:45	15 April 2019	Mistra / Mgiebah	07:30 – 09:30

**APPENDIX II continued.**

Date	Location	Observation time	Date	Location	Observation time
16 April 2019	Comino	07:30 – 09:30	20 April 2019	Comino	07:00 – 09:00
16 April 2019	Gozo: Marsalforn	07:30 – 09:30	20 April 2019	Gozo: Qala	07:00 – 09:00
16 April 2019	Gozo: Ghadira ta' Sarraflu	07:30 – 09:30	20 April 2019	Gozo: Wied il-Mielah	08:00 – 10:00
16 April 2019	Anchor Bay / Rdum taht il-Mellieha	07:00 – 09:00	20 April 2019	Cirkewwa / Torri l-Ahmar	08:00 – 10:00
16 April 2019	Mtahleb to Migra l-Ferha	09:00 – 11:00	20 April 2019	Fomm ir-Rih	07:00 – 09:00
16 April 2019	Fawwara	07:00 – 09:00	20 April 2019	Rdum ta' Had-Dingli	09:00 – 11:00
16 April 2019	Delimara Point	07:00 – 09:00	20 April 2019	Lapsi	07:30 – 09:30
16 April 2019	Zonqor Point	07:00 – 09:00	20 April 2019	San Tumas	08:30 – 10:30
16 April 2019	Ghallis	07:30 – 09:30	20 April 2019	Rinella	07:00 – 09:00
16 April 2019	L-Ahrax tal-Mellieha	07:30 – 09:30	20 April 2019	Wardija	07:50 – 09:50
17 April 2019	Comino	07:00 – 09:00	21 April 2019	Comino	08:00 – 10:00
17 April 2019	Gozo: Qala	07:00 – 09:00	21 April 2019	Gozo: San Blas	08:00 – 10:00
17 April 2019	Gozo: Wied il-Mielah	07:00 – 09:00	21 April 2019	Gozo: Ta' Cenc	07:00 – 09:00
17 April 2019	Cirkewwa / Torri l-Ahmar	07:00 – 09:00	21 April 2019	Ghajn Tuffieha	07:00 – 09:00
17 April 2019	Fomm ir-Rih	09:00 – 11:00	21 April 2019	Gnejna	07:30 – 09:30
17 April 2019	Rdum ta' Had-Dingli	08:00 – 10:00	21 April 2019	Zurrieq	08:00 – 10:00
17 April 2019	Lapsi	08:00 – 10:00	21 April 2019	Ghar Hasan	08:00 – 10:00
17 April 2019	San Tumas	09:30 – 11:30	21 April 2019	Xghajra Ta' Barkat	07:30 – 09:30
17 April 2019	Rinella	07:15 – 09:15	21 April 2019	White Rocks	07:30 – 09:30
17 April 2019	Wardija	07:00 – 09:00	21 April 2019	Mistra / Mgiebah	07:30 – 09:30
18 April 2019	Comino	07:30 – 09:30	22 April 2019	Comino	08:00 – 10:00
18 April 2019	Gozo: San Blas	07:00 – 09:00	22 April 2019	Gozo: Marsalforn	07:00 – 09:00
18 April 2019	Gozo: Ta' Cenc	07:00 – 09:00	22 April 2019	Gozo: Ghadira ta' Sarraflu	07:00 – 09:00
18 April 2019	Ghajn Tuffieha	07:30 – 09:30	22 April 2019	Anchor Bay / Rdum taht il-Mellieha	09:30 – 11:30
18 April 2019	Gnejna	07:00 – 09:00	22 April 2019	Mtahleb to Migra l-Ferha	07:30 – 09:30
18 April 2019	Zurrieq	07:00 – 09:00	22 April 2019	Fawwara	07:00 – 09:00
18 April 2019	Ghar Hasan	08:00 – 10:00	22 April 2019	Delimara Point	08:00 – 10:00
18 April 2019	Xghajra Ta' Barkat	07:00 – 09:00	22 April 2019	Zonqor Point	07:00 – 09:00
18 April 2019	White Rocks	07:00 – 09:00	22 April 2019	Ghallis	07:45 – 09:45
18 April 2019	Mistra / Mgiebah	07:30 – 09:30	22 April 2019	L-Ahrax tal-Mellieha	07:30 – 09:30
19 April 2019	Comino	07:00 – 09:00	23 April 2019	Comino	08:00 – 10:00
19 April 2019	Gozo: Marsalforn	07:00 – 09:00	23 April 2019	Gozo: Qala	07:00 – 09:00
19 April 2019	Gozo: Ghadira ta' Sarraflu	07:00 – 09:00	23 April 2019	Gozo: Wied il-Mielah	07:30 – 09:30
19 April 2019	Anchor Bay / Rdum taht il-Mellieha	08:00 – 10:00	23 April 2019	Cirkewwa / Torri l-Ahmar	07:00 – 09:00
19 April 2019	Mtahleb to Migra l-Ferha	11:00 – 13:00	23 April 2019	Fomm ir-Rih	08:00 – 10:00
19 April 2019	Fawwara	08:30 – 10:30	23 April 2019	Rdum ta' Had-Dingli	08:00 – 10:00
19 April 2019	Delimara Point	08:00 – 10:00	23 April 2019	Lapsi	07:00 – 09:00
19 April 2019	Zonqor Point	08:00 – 10:00	23 April 2019	San Tumas	08:00 – 10:00
19 April 2019	Ghallis	08:00 – 10:00	23 April 2019	Rinella	07:00 – 09:00
19 April 2019	L-Ahrax tal-Mellieha	08:00 – 10:00	23 April 2019	Wardija	07:25 – 9:25

**APPENDIX II continued.**

Date	Location	Observation time	Date	Location	Observation time
24 April 2019	Comino	07:00 – 09:00	28 April 2019	Comino	08:00 – 10:00
24 April 2019	Gozo: San Blas	07:30 – 09:30	28 April 2019	Gozo: Marsalforn	07:00 – 09:00
24 April 2019	Gozo: Ta' Cenc	07:30 – 09:30	28 April 2019	Gozo: Ghadira ta' Sarraflu	07:30 – 09:30
24 April 2019	Ghajn Tuffieha	08:00 – 10:00	28 April 2019	Anchor Bay / Rdum taht il-Mellieha	08:15 – 10:15
24 April 2019	Gnejna	08:00 – 10:00	28 April 2019	Mtahleb to Migra l-Ferha	09:00 – 11:00
24 April 2019	Zurrieq	07:30 – 09:30	28 April 2019	Fawwara	08:00 – 10:00
24 April 2019	Ghar Hasan	07:00 – 09:00	28 April 2019	Delimara Point	07:00 – 09:00
24 April 2019	Xghajra Ta' Barkat	07:00 – 09:00	28 April 2019	Zonqor Point	07:00 – 09:00
24 April 2019	White Rocks	07:45 – 09:45	28 April 2019	Ghallis	09:00 – 11:00
24 April 2019	Mistra / Mgiebah	07:30 – 09:30	28 April 2019	L-Ahrax tal-Mellieha	08:00 – 10:00
25 April 2019	Comino	07:30 – 09:30	29 April 2019	Comino	07:00 – 09:00
25 April 2019	Gozo: Marsalforn	07:00 – 09:00	29 April 2019	Gozo: Qala	07:00 – 09:00
25 April 2019	Gozo: Ghadira ta' Sarraflu	07:30 – 09:30	29 April 2019	Gozo: Wied il-Mielah	07:00 – 09:00
25 April 2019	Anchor Bay / Rdum taht il-Mellieha	10:00 – 12:00	29 April 2019	Cirkewwa / Torri l-Ahmar	08:00 – 10:00
25 April 2019	Mtahleb to Migra l-Ferha	08:00 – 10:00	29 April 2019	Fomm ir-Rih	07:00 – 09:00
25 April 2019	Fawwara	09:00 – 11:00	29 April 2019	Rdum ta' Had-Dingli	10:00 – 12:00
25 April 2019	Delimara Point	09:00 – 11:00	29 April 2019	Lapsi	07:30 – 09:30
25 April 2019	Zonqor Point	07:00 – 09:00	29 April 2019	San Tumas	08:00 – 10:00
25 April 2019	Ghallis	07:05 – 09:05	29 April 2019	Rinella	08:00 – 10:00
25 April 2019	L-Ahrax tal-Mellieha	07:30 – 09:30	29 April 2019	Wardija	08:30 – 10:30
26 April 2019	Comino	07:00 – 09:00	30 April 2019	Comino	07:00 – 09:00
26 April 2019	Gozo: Qala	07:00 – 09:00	30 April 2019	Gozo: San Blas	07:00 – 09:00
26 April 2019	Gozo: Wied il-Mielah	07:00 – 09:00	30 April 2019	Gozo: Ta' Cenc	07:00 – 09:00
26 April 2019	Cirkewwa / Torri l-Ahmar	09:00 – 11:00	30 April 2019	Ghajn Tuffieha	08:00 – 10:00
26 April 2019	Fomm ir-Rih	07:30 – 09:30	30 April 2019	Gnejna	07:30 – 09:30
26 April 2019	Rdum ta' Had-Dingli	08:00 – 10:00	30 April 2019	Zurrieq	07:30 – 09:30
26 April 2019	Lapsi	08:00 – 10:00	30 April 2019	Ghar Hasan	07:00 – 09:00
26 April 2019	San Tumas	09:00 – 11:00	30 April 2019	Xghajra Ta' Barkat	08:00 – 10:00
26 April 2019	Rinella	07:00 – 09:00	30 April 2019	White Rocks	07:30 – 09:30
26 April 2019	Wardija	07:30 – 09:30	30 April 2019	Mistra / Mgiebah	08:30 – 10:30
27 April 2019	Comino	07:00 – 09:00	1 May 2019	Comino	07:00 – 09:00
27 April 2019	Gozo: San Blas	07:00 – 09:00	1 May 2019	Gozo: Marsalforn	07:30 – 09:30
27 April 2019	Gozo: Ta' Cenc	07:00 – 09:00	1 May 2019	Gozo: Ghadira ta' Sarraflu	07:30 – 09:30
27 April 2019	Ghajn Tuffieha	08:00 – 10:00	1 May 2019	Anchor Bay / Rdum taht il-Mellieha	07:45 – 09:45
27 April 2019	Gnejna	08:00 – 10:00	1 May 2019	Mtahleb to Migra l-Ferha	08:00 – 10:00
27 April 2019	Zurrieq	08:00 – 10:00	1 May 2019	Fawwara	07:00 – 09:00
27 April 2019	Ghar Hasan	08:00 – 10:00	1 May 2019	Delimara Point	08:00 – 10:00
27 April 2019	Xghajra Ta' Barkat	07:30 – 09:30	1 May 2019	Zonqor Point	07:30 – 09:30
27 April 2019	White Rocks	07:15 – 09:15	1 May 2019	Ghallis	07:15 – 09:15
27 April 2019	Mistra / Mgiebah	08:00 – 10:00	1 May 2019	L-Ahrax tal-Mellieha	08:00 – 10:00

**APPENDIX II continued.**

Date	Location	Observation time	Date	Location	Observation time
2 May 2019	Comino	07:00 – 09:00	6 May 2019	Comino	07:00 – 09:00
2 May 2019	Gozo: Qala	07:00 – 09:00	6 May 2019	Gozo: San Blas	07:00 – 09:00
2 May 2019	Gozo: Wied il-Mielah	07:00 – 09:00	6 May 2019	Gozo: Ta' Cenc	07:00 – 09:00
2 May 2019	Cirkewwa / Torri l-Ahmar	08:00 – 10:00	6 May 2019	Ghajn Tuffieha	09:00 – 11:00
2 May 2019	Fomm ir-Rih	08:00 – 10:00	6 May 2019	Gnejna	07:30 – 09:30
2 May 2019	Rdum ta' Had-Dingli	09:00 – 11:00	6 May 2019	Zurrieq	07:00 – 09:00
2 May 2019	Lapsi	07:00 – 09:00	6 May 2019	Ghar Hasan	08:00 – 10:00
2 May 2019	San Tumas	09:00 – 11:00	6 May 2019	Xghajra Ta' Barkat	07:00 – 09:00
2 May 2019	Rinella	07:00 – 09:00	6 May 2019	White Rocks	07:30 – 09:30
2 May 2019	Wardija	07:30 – 09:30	6 May 2019	Mistra / Mgiebah	08:00 – 10:00
3 May 2019	Comino	07:30 – 09:30	7 May 2019	Comino	07:30 – 09:30
3 May 2019	Gozo: San Blas	07:00 – 09:00	7 May 2019	Gozo: Marsalforn	08:00 – 10:00
3 May 2019	Gozo: Ta' Cenc	07:00 – 09:00	7 May 2019	Gozo: Ghadira ta' Sarraflu	07:00 – 09:00
3 May 2019	Ghajn Tuffieha	07:00 – 09:00	7 May 2019	Anchor Bay / Rdum taht il-Mellieha	07:30 – 09:30
3 May 2019	Gnejna	08:00 – 10:00	7 May 2019	Mtahleb to Migra l-Ferha	09:00 – 11:00
3 May 2019	Zurrieq	07:30 – 09:30	7 May 2019	Fawwara	07:30 – 09:30
3 May 2019	Ghar Hasan	08:00 – 10:00	7 May 2019	Delimara Point	09:00 – 11:00
3 May 2019	Xghajra Ta' Barkat	07:00 – 09:00	7 May 2019	Zonqor Point	07:00 – 09:00
3 May 2019	White Rocks	07:30 – 09:30	7 May 2019	Ghallis	07:30 – 09:30
3 May 2019	Mistra / Mgiebah	07:00 – 09:00	7 May 2019	L-Ahrax tal-Mellieha	07:00 – 09:00
4 May 2019	Comino	07:30 – 09:30	8 May 2019	Comino	07:00 – 09:00
4 May 2019	Gozo: Marsalforn	07:00 – 09:00	8 May 2019	Gozo: Qala	07:30 – 09:30
4 May 2019	Gozo: Ghadira ta' Sarraflu	07:00 – 09:00	8 May 2019	Gozo: Wied il-Mielah	07:00 – 09:00
4 May 2019	Anchor Bay / Rdum taht il-Mellieha	08:00 – 10:00	8 May 2019	Cirkewwa / Torri l-Ahmar	07:15 – 09:15
4 May 2019	Mtahleb to Migra l-Ferha	07:30 – 09:30	8 May 2019	Fomm ir-Rih	08:00 – 10:00
4 May 2019	Fawwara	10:00 – 12:00	8 May 2019	Rdum ta' Had-Dingli	08:00 – 10:00
4 May 2019	Delimara Point	07:00 – 09:00	8 May 2019	Lapsi	07:00 – 09:00
4 May 2019	Zonqor Point	07:00 – 09:00	8 May 2019	San Tumas	07:00 – 09:00
4 May 2019	Ghallis	08:00 – 10:00	8 May 2019	Rinella	07:00 – 09:00
4 May 2019	L-Ahrax tal-Mellieha	07:00 – 09:00	8 May 2019	Wardija	07:30 – 09:30
5 May 2019	Comino	07:30 – 09:30	9 May 2019	Comino	07:00 – 09:00
5 May 2019	Gozo: Qala	07:30 – 09:30	9 May 2019	Gozo: San Blas	07:30 – 09:30
5 May 2019	Gozo: Wied il-Mielah	07:00 – 09:00	9 May 2019	Gozo: Ta' Cenc	08:00 – 10:00
5 May 2019	Cirkewwa / Torri l-Ahmar	07:50 – 09:50	9 May 2019	Ghajn Tuffieha	08:00 – 10:00
5 May 2019	Fomm ir-Rih	07:00 – 09:00	9 May 2019	Gnejna	07:00 – 09:00
5 May 2019	Rdum ta' Had-Dingli	07:30 – 09:30	9 May 2019	Zurrieq	08:00 – 10:00
5 May 2019	Lapsi	07:30 – 09:30	9 May 2019	Ghar Hasan	08:00 – 10:00
5 May 2019	San Tumas	09:00 – 11:00	9 May 2019	Xghajra Ta' Barkat	08:00 – 10:00
5 May 2019	Rinella	07:00 – 09:00	9 May 2019	White Rocks	07:30 – 09:30
5 May 2019	Wardija	07:30 – 09:30	9 May 2019	Mistra / Mgiebah	07:30 – 09:30

**APPENDIX II continued.**

Date	Location	Observation time	Date	Location	Observation time
10 May 2019	Comino	07:30 – 09:30	13 May 2019	Comino	07:00 – 09:00
10 May 2019	Gozo: Marsalforn	07:00 – 09:00	13 May 2019	Gozo: Marsalforn	08:00 – 10:00
10 May 2019	Gozo: Ghadira ta' Sarraflu	07:00 – 09:00	13 May 2019	Gozo: Ghadira ta' Sarraflu	07:00 – 09:00
10 May 2019	Anchor Bay / Rdum taht il-Mellieha	07:30 – 09:30	13 May 2019	Anchor Bay / Rdum taht il-Mellieha	07:30 – 09:30
10 May 2019	Mtahleb to Migra l-Ferha	08:00 – 10:00	13 May 2019	Mtahleb to Migra l-Ferha	07:30 – 09:30
10 May 2019	Fawwara	07:00 – 09:00	13 May 2019	Fawwara	08:00 – 10:00
10 May 2019	Delimara Point	07:00 – 09:00	13 May 2019	Delimara Point	09:00 – 11:00
10 May 2019	Zonqor Point	07:00 – 09:00	13 May 2019	Zonqor Point	07:00 – 09:00
10 May 2019	Ghallis	07:00 – 09:00	13 May 2019	Ghallis	07:30 – 09:30
10 May 2019	L-Ahrax tal-Mellieha	07:00 – 09:00	13 May 2019	L-Ahrax tal-Mellieha	07:00 – 09:00
11 May 2019	Comino	07:30 – 09:30	14 May 2019	Comino	07:00 – 09:00
11 May 2019	Gozo: Qala	07:00 – 09:00	14 May 2019	Gozo: Qala	07:00 – 09:00
11 May 2019	Gozo: Wied il-Mielah	07:00 – 09:00	14 May 2019	Gozo: Wied il-Mielah	07:30 – 09:30
11 May 2019	Cirkewwa / Torri l-Ahmar	07:00 – 09:00	14 May 2019	Cirkewwa / Torri l-Ahmar	08:00 – 10:00
11 May 2019	Fomm ir-Rih	07:00 – 09:00	14 May 2019	Fomm ir-Rih	07:30 – 09:30
11 May 2019	Rdum ta' Had-Dingli	07:00 – 09:00	14 May 2019	Rdum ta' Had-Dingli	08:00 – 10:00
11 May 2019	Lapsi	07:00 – 09:00	14 May 2019	Lapsi	07:00 – 09:00
11 May 2019	San Tumas	07:00 – 09:00	14 May 2019	San Tumas	08:00 – 10:00
11 May 2019	Rinella	08:00 – 10:00	14 May 2019	Rinella	07:30 – 09:30
11 May 2019	Wardija	07:20 – 09:20	14 May 2019	Wardija	07:00 – 09:00
12 May 2019	Comino	07:00 – 09:00	15 May 2019	Comino	07:00 – 09:00
12 May 2019	Gozo: San Blas	07:00 – 09:00	15 May 2019	Gozo: San Blas	07:00 – 09:00
12 May 2019	Gozo: Ta' Cenc	07:00 – 09:00	15 May 2019	Gozo: Ta' Cenc	07:00 – 09:00
12 May 2019	Ghajn Tuffieha	07:10 – 09:10	15 May 2019	Ghajn Tuffieha	09:00 – 11:00
12 May 2019	Gnejna	07:00 – 09:00	15 May 2019	Gnejna	09:00 – 11:00
12 May 2019	Zurrieq	07:00 – 09:00	15 May 2019	Zurrieq	07:00 – 09:00
12 May 2019	Ghar Hasan	07:00 – 09:00	15 May 2019	Ghar Hasan	08:00 – 10:00
12 May 2019	Xghajra Ta' Barkat	07:00 – 09:00	15 May 2019	Xghajra Ta' Barkat	07:00 – 09:00
12 May 2019	White Rocks	07:30 – 09:30	15 May 2019	White Rocks	07:00 – 09:00
12 May 2019	Mistra / Mgiebah	07:15 – 09:15	15 May 2019	Mistra / Mgiebah	07:30 – 09:30